



- Freehold
- Three bedroom
- Extended kitchen/breakfast room
- South facing rear garden

Broad Lane, Hampton

A beautifully presented three bedroom Mock Tudor family home situated in a convenient location.

£659,950



Property Description

A beautifully presented three bedroom Mock Tudor family home situated in a convenient location. The living space on the ground floor comprises of a front door opening on to the hallway, a spacious double reception room, modern kitchen/breakfast room with separate utility room/study, third bedroom and downstairs W/C. The first floor offers the master bedroom with fitted wardrobes, one further double bedroom and the family bathroom.

Further benefits include a south facing rear garden reaching over 40ft and approved planning permission to extend into the loft (application number 19/1665/PS192).

Location

The property is situated in a highly sought after location in the heart of Hampton benefitting from all the amenities of Hampton Village. Hampton Station, The royal grounds of Bushy Park and River Thames are all close by along with some outstanding local schools.

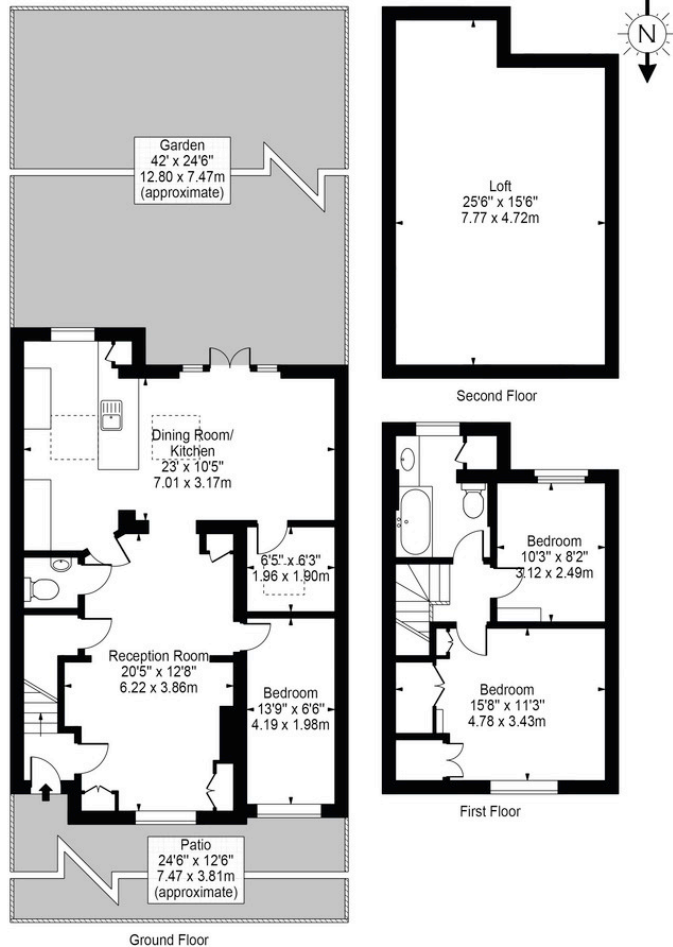




Broad Lane, TW12

Approx. Gross Internal Area 1115 Sq Ft - 103.59 Sq M
(Excluding Loft)

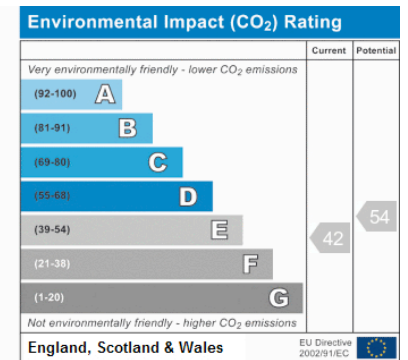
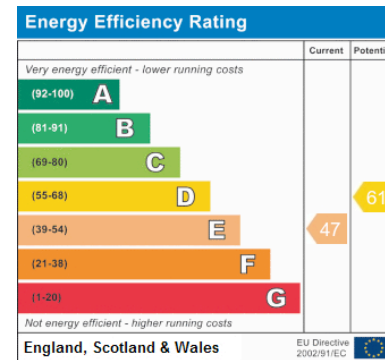
Approx. Gross Internal Area Of Loft 367 Sq Ft - 34.10 Sq M



Ground Floor

For Illustration Purposes Only - Not To Scale

This floor plan should be used as a general outline for guidance only and does not constitute in whole or in part an offer or contract. Any intending purchaser or lessee should satisfy themselves by inspection, searches, enquiries and full survey as to the correctness of each statement. Any areas, measurements or distances quoted are approximate and should not be used to value a property or be the basis of any sale or let.



www.griffinstevens.co.uk
020 8979 1597
enquiries@griffinstevens.co.uk

Agents Note: Whilst every care has been taken to prepare these sales particulars, they are for guidance purposes only. All measurements are approximate are for general guidance purposes only and whilst every care has been taken to ensure their accuracy, they should not be relied upon and potential buyers are advised to recheck the measurements