



Longfield Street, SW18

£2,000 PCM

A Lovely Three Bedroom family home with access to a private garden. The property further benefits from two bathrooms and would be ideal for a family.

- Three Double bedroom house
- Two bathroom
- Large lounge
- Separate Kitchen
- Private garden
- Furnished

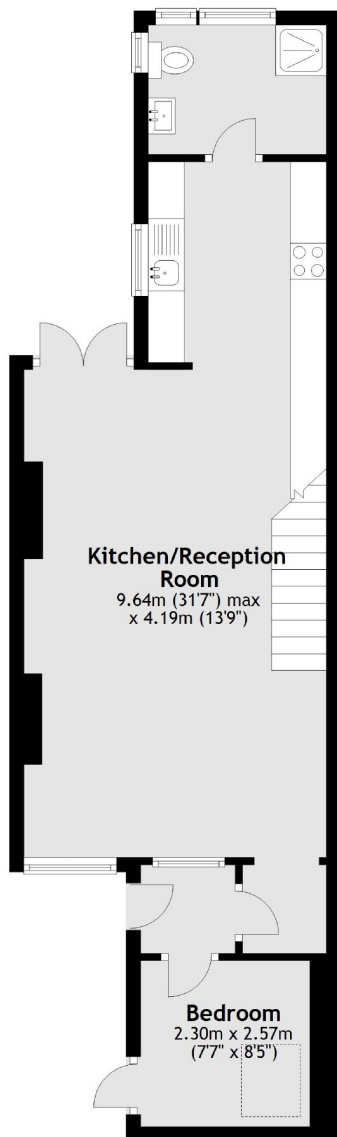
For further information on the costs associated with renting a property, please pop into our office or visit our website.



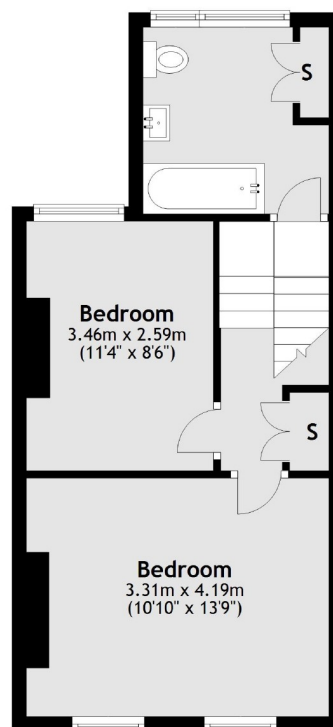
Located in the heart of Soutfields benefiting from a fantastic selection of shops, restaurants and other amenities. Southfields Tube Station is a short walk away offering fantastic links to many areas of London.



Ground Floor



First Floor



Total area: approx. 85.3 sq. metres (918.5 sq. feet)

Jacksons Wandsworth
507 Old York Road
London
SW18 1TF
020 8875 8899
wandsworth.lettings@jacksonsestateagents.com

Energy Rating: We aim to make our particulars both accurate and reliable. However they are not guaranteed; nor do they form part of an offer or contract. If you require clarification on any points then please contact us, especially if you're traveling some distance to view. Please note that appliances and heating systems have not been tested and therefore no warranties can be given as to their good working order.