

# SNELLERS

ESTATE AGENTS



## Park Gardens, KT2

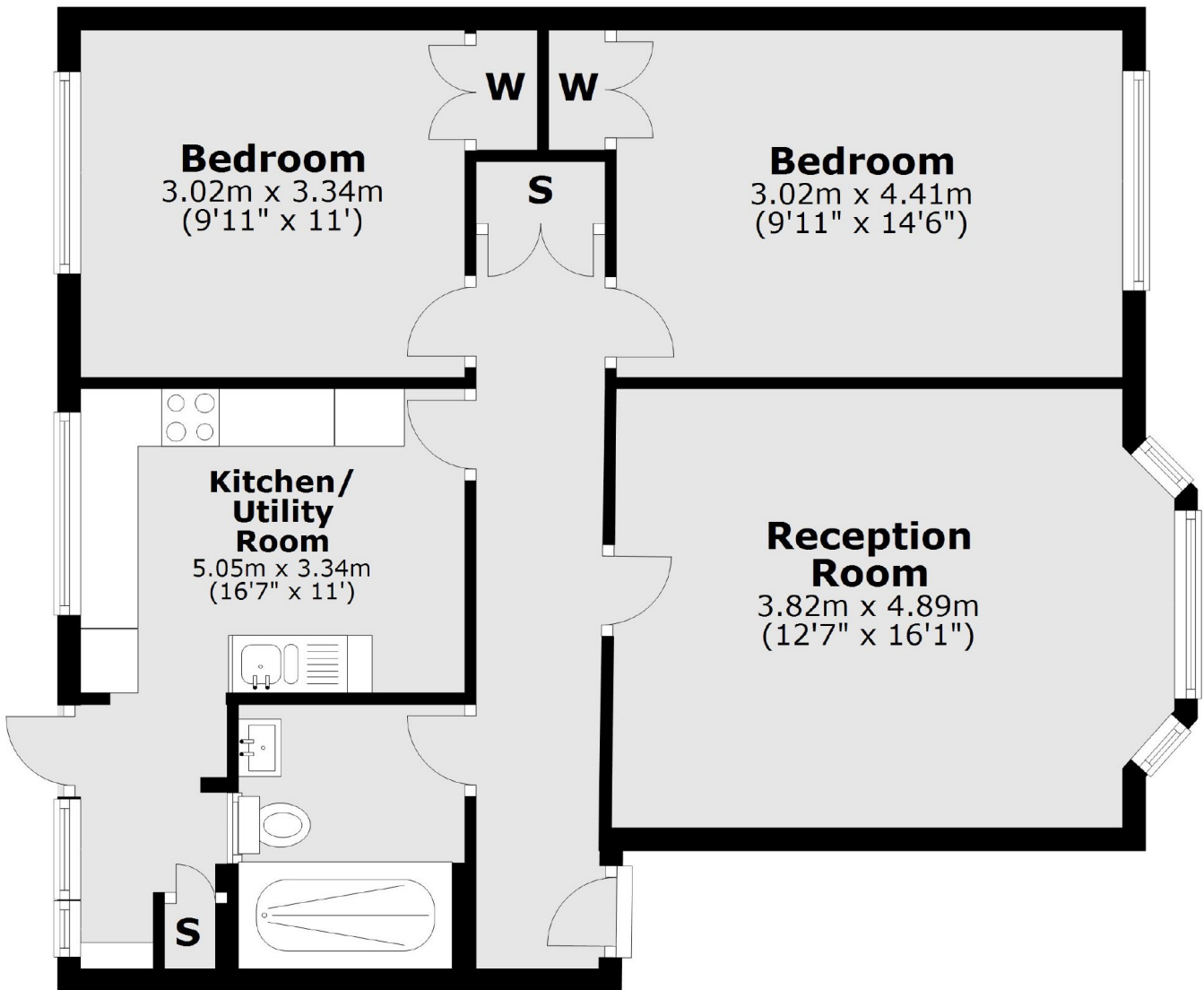
£450,000

A stunning two bedroom ground floor maisonette which has been the subject of total refurbishment by the current owners to provide an outstanding contemporary home. The apartment offers almost 750 sq.ft of living space and the advantage of direct access to a private south facing rear garden.

The apartment is situated in a small cul-de-sac backing onto Richmond Park. There are local shops and bus routes nearby and Norbiton station is just a mile away.

- Large Reception Room • New Kitchen • Two Bedrooms •
- New Bathroom • Private Garden • No Chain •

## Ground Floor



Total area: approx. 69.6 sq. metres (749.0 sq. feet)

Snellers Teddington Sales  
74 Broad Street  
Teddington  
TW11 8QX  
020 8408 8040  
teddingtonsales@snellers.co.uk

Energy Rating: D We aim to make our particulars both accurate and reliable. However they are not guaranteed; nor do they form part of an offer or contract. If you require clarification on any points then please contact us, especially if you're traveling some distance to view. Please note that appliances and heating systems have not been tested and therefore no warranties can be given as to their good working order