

SNELLERS

ESTATE AGENTS



South Road, TW2

£1,150,000

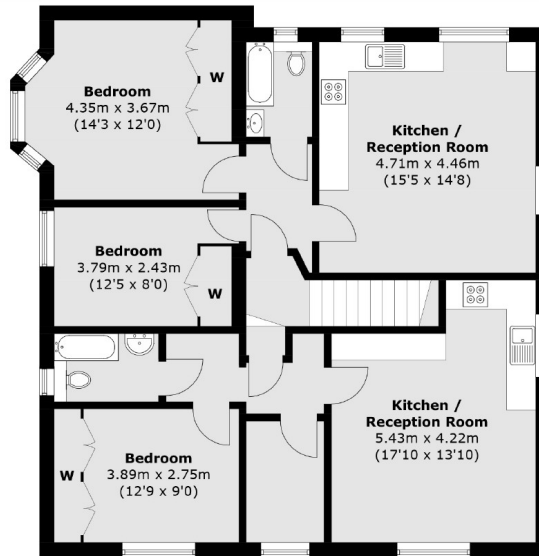
A Victorian double fronted detached villa measuring just under 2500 sq ft. This property is currently set up as four separate flats but is being sold in its entirety along with the land it sits on. This property is perfect for a developer or investor.

South Road is less than half a mile to Waldegrave School and Fulwell Station It is also less than a mile to Hampton Hill and Strawberry Hill Station.

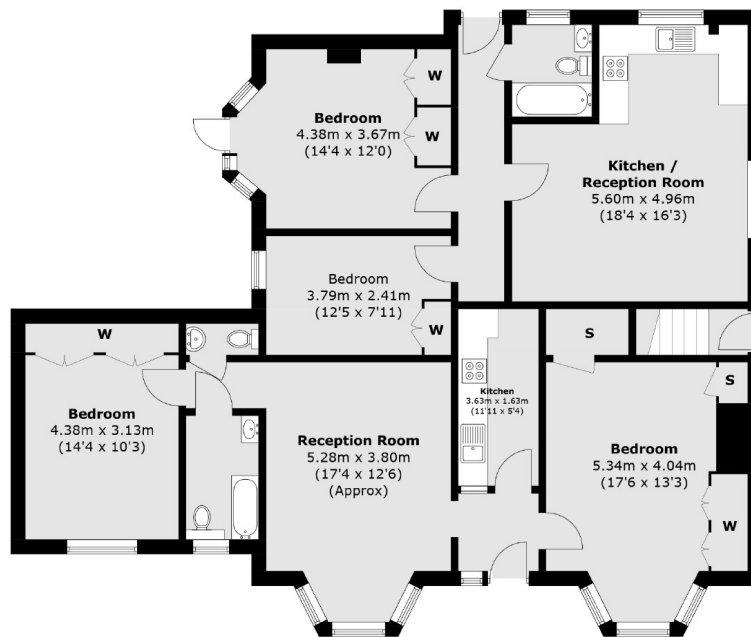
- Victorian • Detached • Large Plot •
- Off Street Parking • Over 2400 Sq Ft • 0.3m to Waldegrave School •

SNELLERS

ESTATE AGENTS



First Floor



Ground Floor

Total area (approx.): 241.3 sq. m (2,597.3 sq. ft)

Snellers Twickenham Sales
64-66 Heath Road
Twickenham
TW1 4BX
020 8892 5555
twickenhamsales@snellers.co.uk

Energy Rating: TBC We aim to make our particulars both accurate and reliable. However they are not guaranteed; nor do they form part of an offer or contract. If you require clarification on any points then please contact us, especially if you're traveling some distance to view. Please note that appliances and heating systems have not been tested and therefore no warranties can be given as to their good working order