



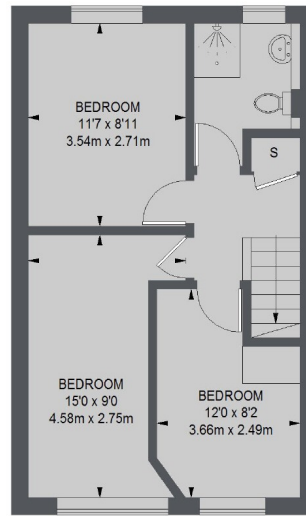
Lanark Close, W5

£519 pw (£2250 pcm)

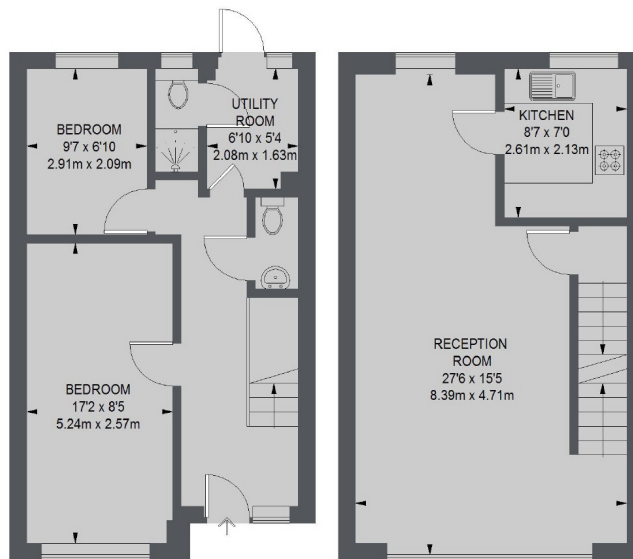
This town house has five bedrooms, kitchen with dining area and two bathrooms. The property also has a driveway with space for two cars and a garden.

Lanark Close is half a mile from Ealing Broadway station and town centre with its shops and restaurants.

- Town House • Garden • Five Bedrooms •
- Wooden Floors • Off Street Parking • Ealing Broadway •



SECOND FLOOR



GROUND FLOOR

FIRST FLOOR

TOTAL APPROX. FLOOR AREA 1269 SQ. FT. (117.91 SQ. M.)

Robertson Smith & Kempson Ealing Lettings
1 The Broadway, London, W5
2NT
020 8840 7885
ealinglettings@robertsonsmithandkempson.co.uk

Energy Rating: C. We aim to make our particulars both accurate and reliable. However they are not guaranteed; nor do they form part of an offer or contract. If you require clarification on any points then please contact us, especially if you're traveling some distance to view. Please note that appliances and heating systems have not been tested and therefore no warranties can be given as to their good working order.