



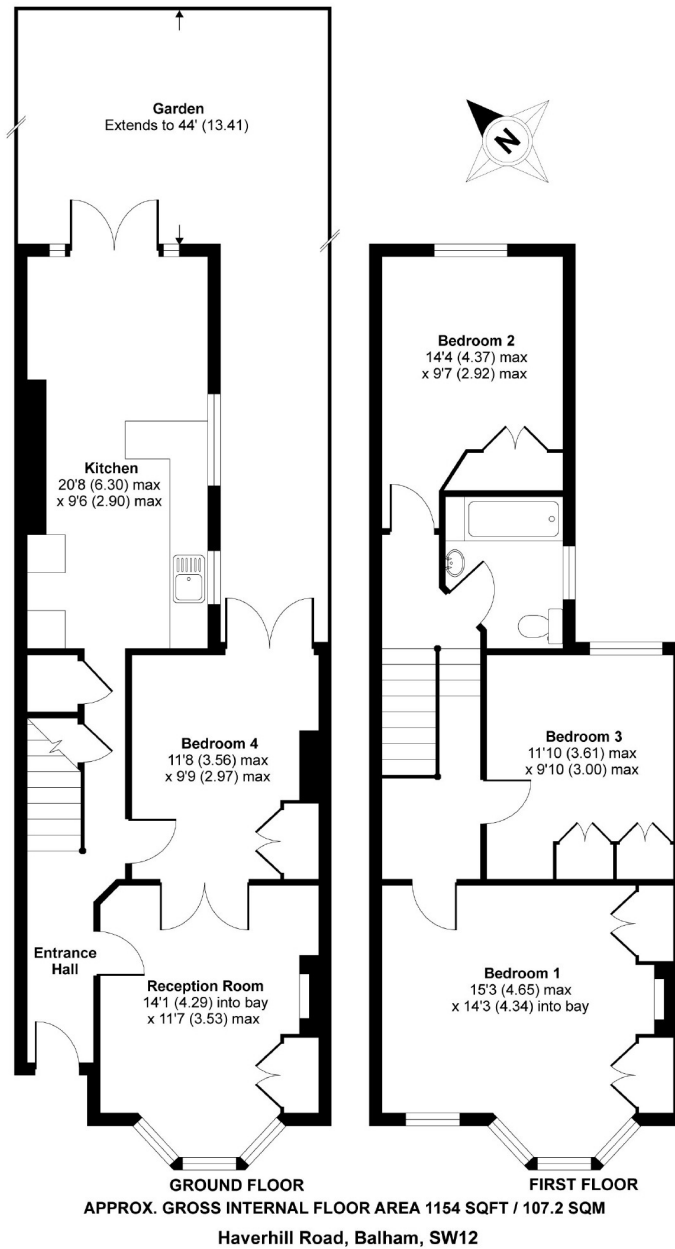
Haverhill Road, SW12

£3,300 PCM

A victorian period mid-terrace house offered in good condition throughout. The property offers suitable accommodation for a professional family or professional sharers.

- Mid-Terrace House
- Modern Reception Room
- Modern Fitted Kitchen
- Four Double Bedrooms
- Private Garden
- Close To Balham Station

For further information on the costs associated with renting a property, please pop into our office or visit our website.



Copyright nichecom.co.uk 2009 Produced for Jacksons the Independent Estate Agents REF : LE09016

Jacksons Balham
8-11 Balham Station Road
London
SW12 9SG
020 8675 6565
balham.lettings@jacksonsestateagents.com

Energy Rating: D We aim to make our particulars both accurate and reliable. However they are not guaranteed; nor do they form part of an offer or contract. If you require clarification on any points then please contact us, especially if you're traveling some distance to view. Please note that appliances and heating systems have not been tested and therefore no warranties can be given as to their good working order.