



Grosvenor Road, W7

£399,950

An exceptional one/two bedroom flat with private courtyard and shared garden offered to the market with no onward chain.



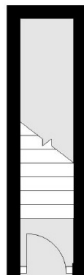
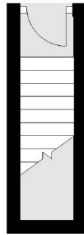
Attractively including a share of the freehold giving you comfort and security. This first floor flat comprises large bright and airy reception room, spacious double bedroom and open dining room with kitchen well placed just off it. Direct access to a private courtyard and a share of a large sun trapped garden also (shared between just two flats). Full size loft with huge potential to extend (STPP).

Ideally located for West Ealing & Hanwell Station (both impending Crossrail) and many frequent and varied bus routes on Uxbridge Road. Elthorne Park a short stroll from the flat to enjoy a beautiful outdoor amenity.

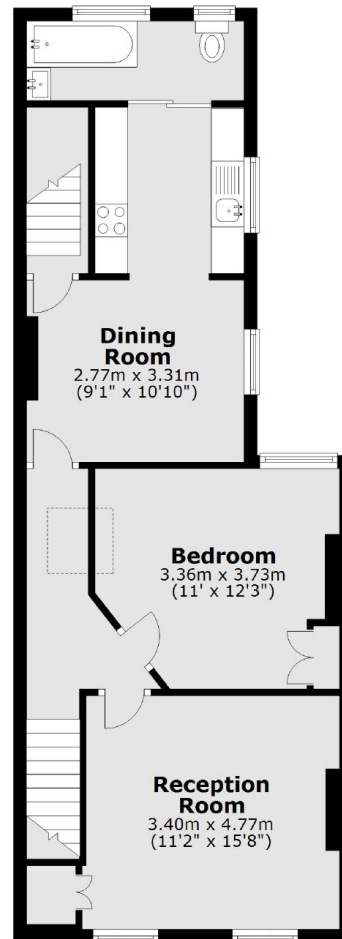
- One/Two Double Bedroom • No Onward Chain • Share Of Freehold •
- Private Courtyard • Large Shared Garden • Crossrail Stations (WE & HAN) •



Ground Floor



First Floor



Total area: approx. 60.8 sq. metres (655.0 sq. feet)

Robertson Smith & Kempson Hanwell Sales
69 Greenford Avenue,
London, W7 1LL
020 8566 2339
hanwellsales@robertsonsmithandkempson.co.uk

Energy Rating: D. We aim to make our particulars both accurate and reliable. However they are not guaranteed; nor do they form part of an offer or contract. If you require clarification on any points then please contact us, especially if you're traveling some distance to view. Please note that appliances and heating systems have not been tested and therefore no warranties can be given as to their good working order.