

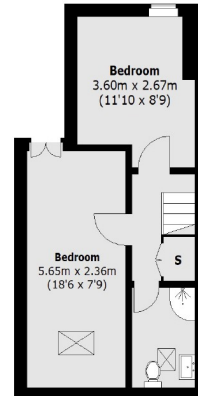


Cambray Road, SW12

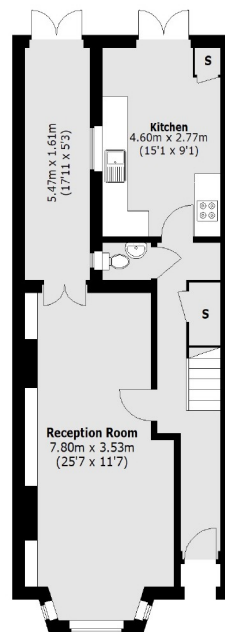
£1,250,000

A five bedroom, two bathroom Victorian house situated on a sought after residential road within the Hyde Farm Estate.

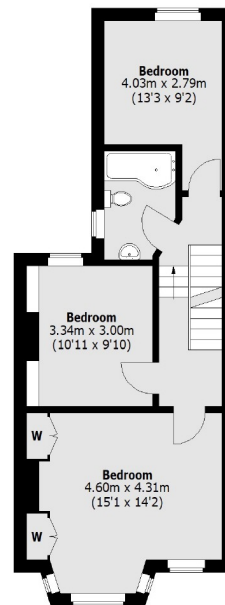
- Freehold House
- Extended Family Home
- Five Bedrooms
- Two Bathrooms
- Generous Double Reception
- Private Garden



Second Floor



Ground Floor



First Floor

Total area (approx.): 143.4 sq. m (1,543.5 sq. ft)

Jacksons Balham
 8-11 Balham Station Road
 London
 SW12 9SG
 020 8675 6555
balham.sales@jacksonsestateagents.com

Energy Rating: D We aim to make our particulars both accurate and reliable. However they are not guaranteed; nor do they form part of an offer or contract. If you require clarification on any points then please contact us, especially if you're traveling some distance to view. Please note that appliances and heating systems have not been tested and therefore no warranties can be given as to their good working order.