

Frank Harris & Co.



Ben Jonson House, EC2Y

£565,000

A bright, third floor, one bedroom flat which has been refurbished throughout.

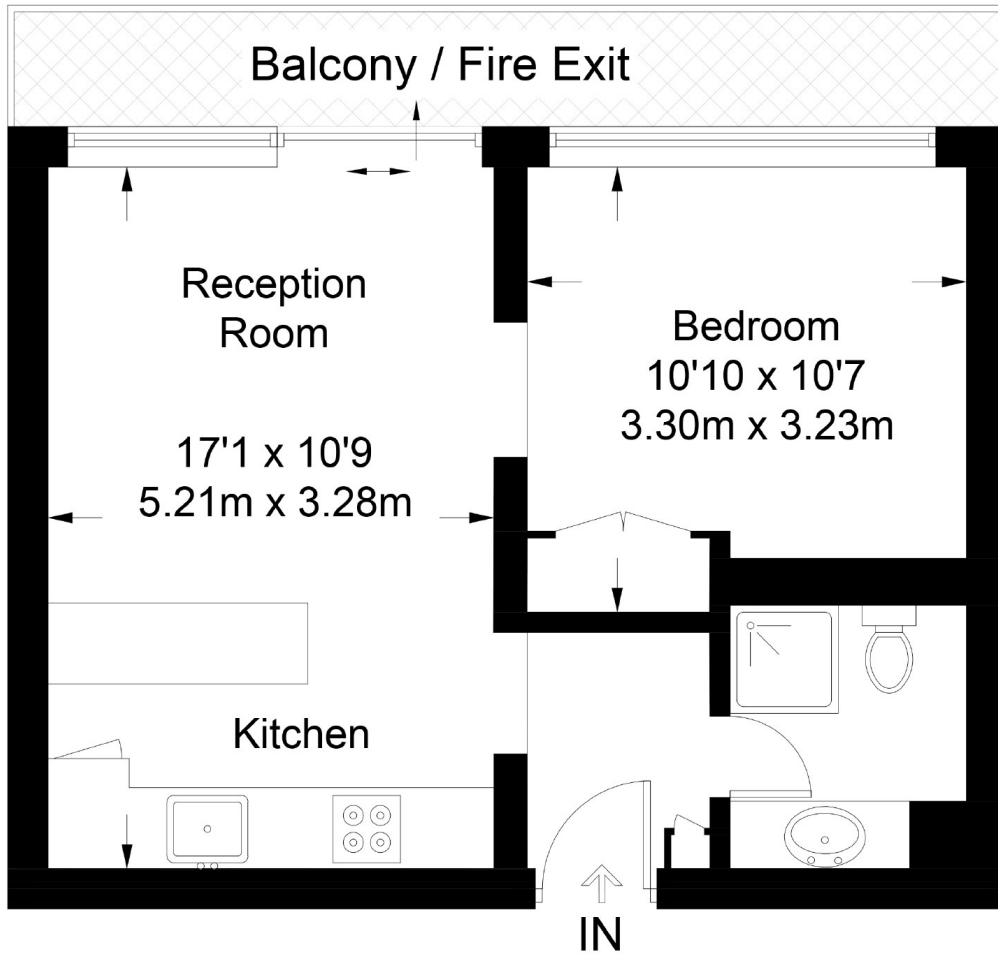
Transport links include Barbican, St. Paul's, Moorgate, Farringdon, and Crossrail stations. City shopping facilities include Cheapside and Moorgate.

- Type F2C • No Chain • Shaker Style Kitchen •
- Shower Room • Close To Waitrose • Communal Gardens •

Frank Harris & Co.

Ben Jonson House

Approximate Gross Internal Area = 384 sq ft / 35.7 sq m



Not to scale, for guidance only and must not be relied upon as a statement of fact.
All measurements and areas are approximate only and have been prepared in
accordance with the current edition of the RICS Code of Measuring Practice.

Frank Harris & Co. Barbican and City
87 Long Lane, London,
EC1A 9ET
020 7600 7000
city@frankharris.co.uk

Energy Rating: TBC. We aim to make our particulars both accurate and reliable. However they are not guaranteed; nor do they form part of an offer or contract. If you require clarification on any points then please contact us, especially if you're traveling some distance to view. Please note that appliances and heating systems have not been tested and therefore no warranties can be given as to their good working order.

