



44 Chamberlain Manor

Simone Well Avenue, Ashford, TN24 8BF

Price £142,500

Spacious second floor flat with views over gardens to the Warren, offered Chain Free at the popular Chamberlain Manor in Simone Weil Avenue. Ideally located close to Sainsburys and Waitrose and about a mile from the town centre and International station.

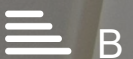
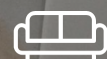
Traditionally constructed in 2015 for the over 55's.

This is a well appointed Retirement Complex of 67 one and two bedroom apartments and the facilities include communal lounges, restaurant, hair salon, activities room, guest room, lift access to all floors, laundry, wellbeing suite, court manager and care services.

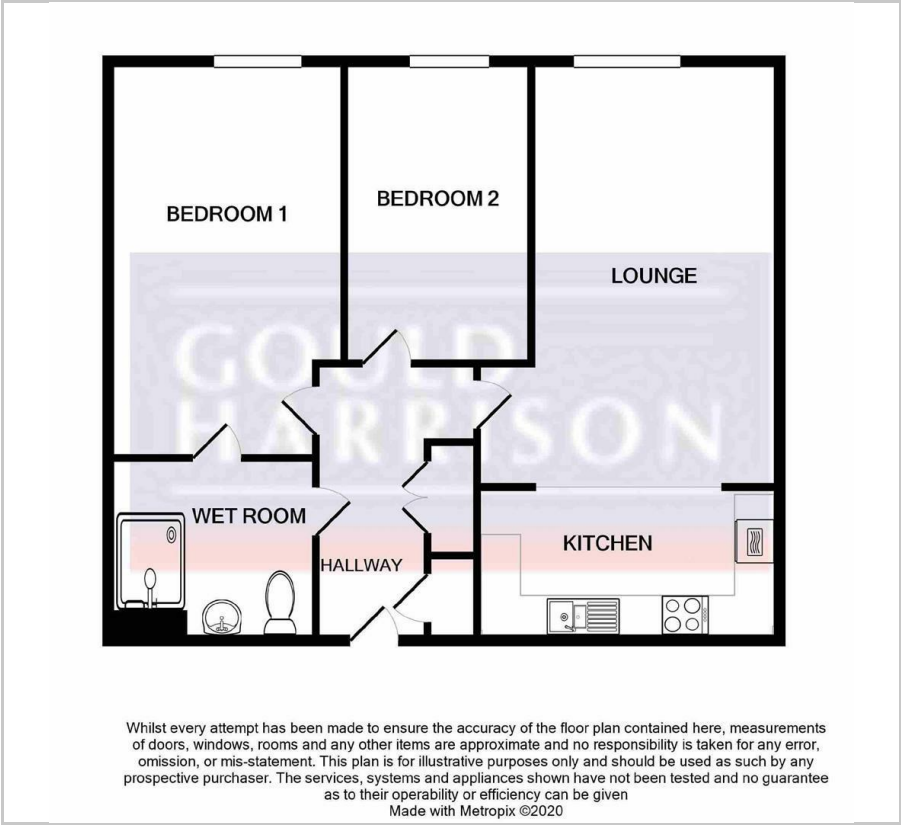
- SPACIOUS SECOND FLOOR FLAT
- TWO BEDROOMS
- POPULAR CHAMBERLAIN MANOR RETIREMENT COMPLEX
- 75% SHARED OWNERSHIP FOR THE OVER 55'S
- NO ONWARD CHAIN

Viewing

Please contact our Ashford Office on 01233 646411 if you wish to arrange a viewing appointment for this property or require further information.



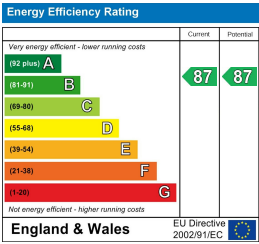
Floor Plan



Area Map



Energy Efficiency Graph



These particulars, whilst believed to be accurate are set out as a general outline only for guidance and do not constitute any part of an offer or contract. Intending purchasers should not rely on them as statements of representation of fact, but must satisfy themselves by inspection or otherwise as to their accuracy. No person in this firms employment has the authority to make or give any representation or warranty in respect of the property.