



Oaklands Road, W7

£440,000

A large two double bedroom ground floor maisonette presented in excellent condition by the current owners and offers a wonderful secluded south facing garden.



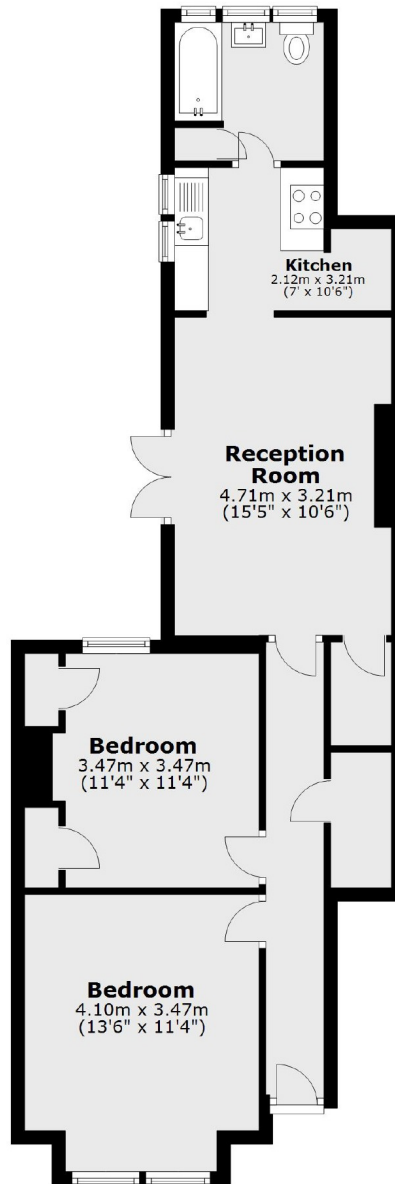
A beautiful flat offering over 650 sq ft which comprises two double bedrooms, large reception room and separate kitchen with family bathroom to the rear. Filled with natural light throughout, this is a wonderful flat for first time buyers or investors alike. Early viewing essential.

Perfectly located for Hanwell Station (Crossrail), Boston Manor (Piccadilly) and many varied and frequent bus routes on Boston Road. Elthorne Park is a short stroll from the flat to enjoy a wonderful amenity. Well regarded school catchment's to choose from locally including the Ofsted outstanding Elthorne High.

- Large Two Double Bedrooms • Secluded South Facing Garden • Well Presented •
 - Hanwell Station (Crossrail) • Elthorne Park • Well Regarded Schools •
-



Ground Floor



Total area: approx. 62.2 sq. metres (669.7 sq. feet)

Robertson Smith & Kempson Hanwell Sales
69 Greenford Avenue,
London, W7 1LL
020 8566 2339
hanwellsales@robertsonsmithandkempson.co.uk

Energy Rating: D. We aim to make our particulars both accurate and reliable. However they are not guaranteed; nor do they form part of an offer or contract. If you require clarification on any points then please contact us, especially if you're traveling some distance to view. Please note that appliances and heating systems have not been tested and therefore no warranties can be given as to their good working order.