

SNELLERS

ESTATE AGENTS



Gould Road, TW2

£829,950

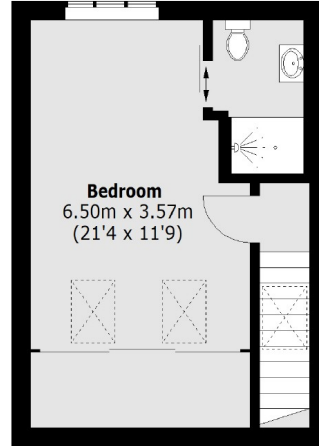
A three double bedroom immaculately presented Victorian family home. There is a front reception with gas fireplace which leads through to the open kitchen / diner with doors out to the landscaped garden. The first floor has two double bedrooms and a family bathroom. The top floor has a master bedroom with ample storage and an en suite shower room.

Gould Road is 0.3 miles to both Kneller Gardens and Twickenham Green with local shops, pubs and restaurants. It is also just under a mile to Whitton Station and Trafalgar School. Waldegrave and Sir Richard Reynolds Schools are just over half a mile away.

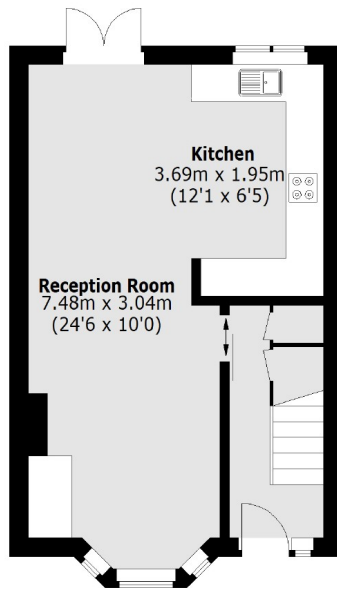
- Victorian • Three Double Bedrooms • Two Bathrooms •
- 0.8m to Whitton Station • 0.4m to Trafalgar School • No Onward Chain •

SNELLERS

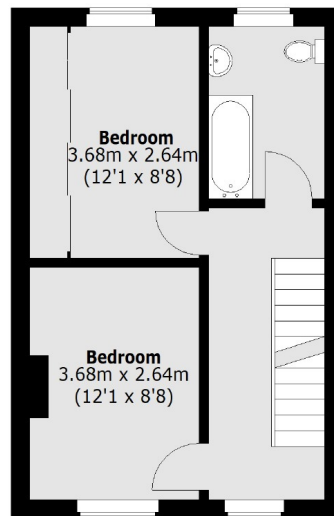
ESTATE AGENTS



Second Floor



Ground Floor



First Floor

Total area (approx.): 101.1 sq. m (1,088.1 sq. ft)

Snellers Twickenham Sales
64-66 Heath Road
Twickenham
TW1 4BX
020 8892 5555
twickenhamsales@snellers.co.uk

Energy Rating: C We aim to make our particulars both accurate and reliable. However they are not guaranteed; nor do they form part of an offer or contract. If you require clarification on any points then please contact us, especially if you're traveling some distance to view. Please note that appliances and heating systems have not been tested and therefore no warranties can be given as to their good working order