

## Castle Way, TW13

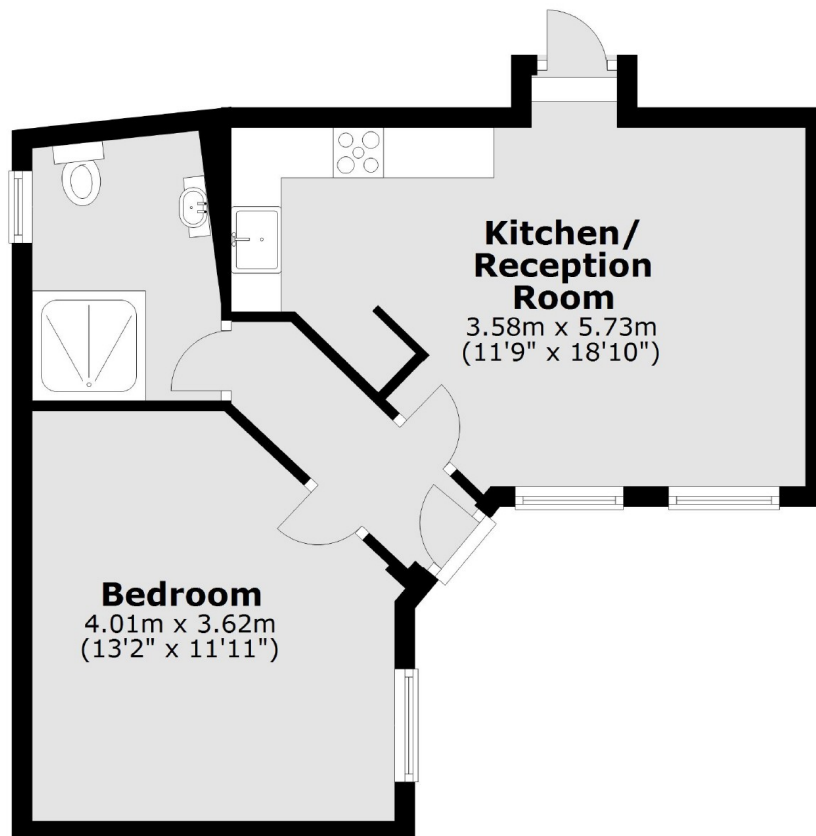
£299,950

A wonderful opportunity to buy a little piece of history with this beautiful one bedroom property with private garden and access to beautifully kept communal grounds. Having been cleverly modernised yet retaining the character of the development, this really is a special property.

Tudor Court is an impressive development of both flats and houses set within the Hanworth Park Estate, an area once used by King Henry VIII as a hunting lodge. A truly unique and privileged place to live.

- One Double Bedroom • Modern Bathroom • Private Garden •
- Communal Gardens • Private Parking • Exclusive Development •

## Ground Floor



Total area: approx. 40.5 sq. metres (436.2 sq. feet)

Snellers Hampton Hill Sales  
197-201 High Street  
Hampton Hill  
TW12 1NL  
020 8783 0083  
hamptonsales@snellers.co.uk

Energy Rating: D We aim to make our particulars both accurate and reliable. However they are not guaranteed; nor do they form part of an offer or contract. If you require clarification on any points then please contact us, especially if you're traveling some distance to view. Please note that appliances and heating systems have not been tested and therefore no warranties can be given as to their good working order