

# FLETCHERS

ESTATE AGENTS



## Hansard Mews, W14

£1,500,000

This attractive, double-fronted house in a highly sought after mews on the borders of Holland Park and Brook Green. This well maintained home has two double bedrooms, a double garage and a large kitchen/reception.

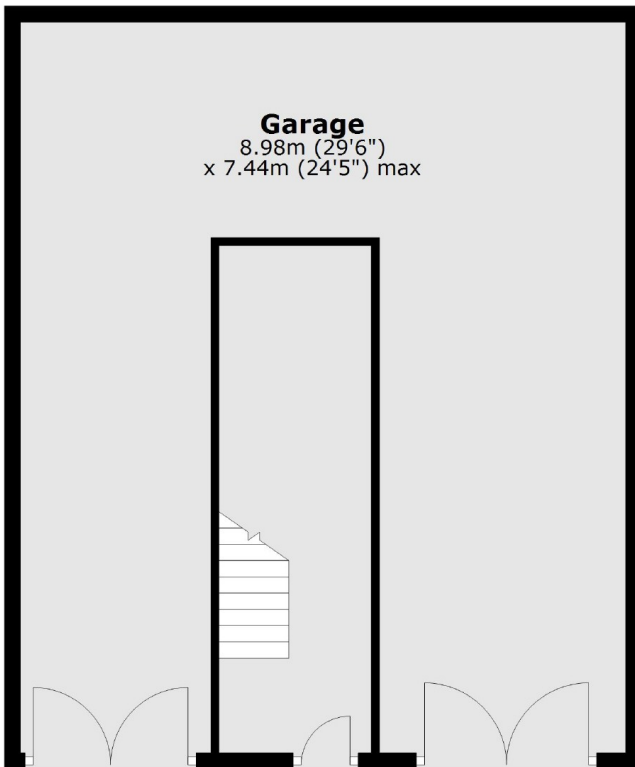
Hansard Mews is within a mile of Holland Park (Central line) and Shepherds Bush (Central line & Overground) and well located for the independent restaurants and boutiques of Brook Green and within easy reach of the world-renowned amenities of Westfield London & Holland Park.

- Double Fronted • Mews House • Near Transport • Scope to Add Value • Close to Amenities • Period Facade •

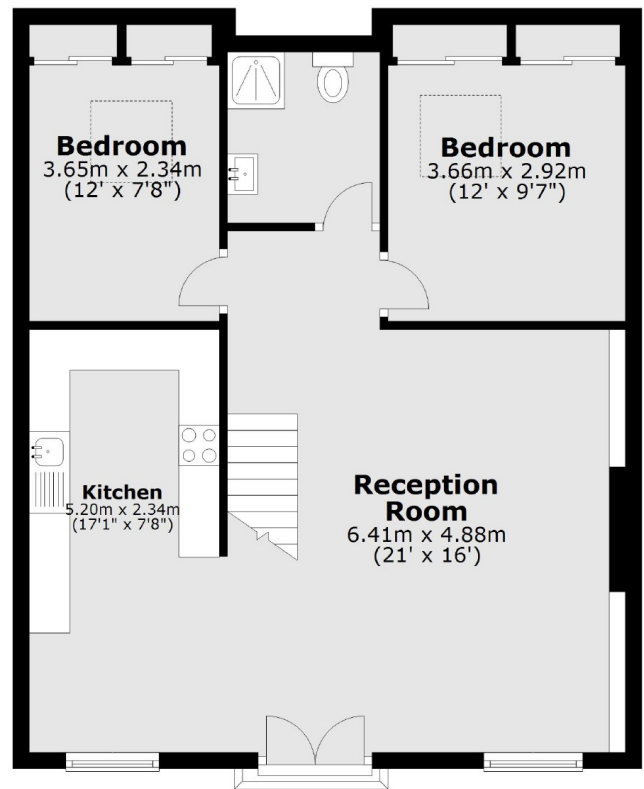
# FLETCHERS

ESTATE AGENTS

## Ground Floor



## First Floor



Total area: approx. 131.8 sq. metres (1418.5 sq. feet)

Fletchers Brook Green Sales  
144 Shepherds Bush Road, Hammersmith, London, W6 7PB  
020 7603 1415  
[brookgreensales@fletcherestates.com](mailto:brookgreensales@fletcherestates.com)

Energy Rating: C. We aim to make our particulars both accurate and reliable. However they are not guaranteed; nor do they form part of an offer or contract. If you require clarification on any points then please contact us, especially if you're traveling some distance to view. Please note that appliances and heating systems have not been tested and therefore no warranties can be given as to their good working order.