

# Frank Harris & Co.



## Tamar House, WC1H

£575,000 pcm

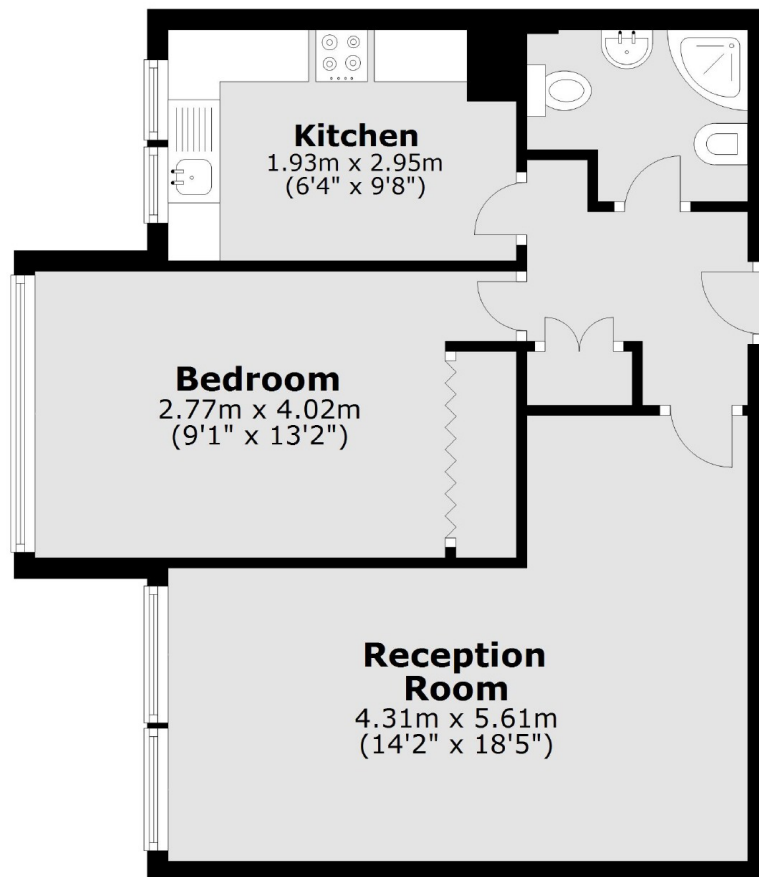
This second floor flat is offered to the market with no onward chain. The property offers 542 square feet of living space, one double bedroom, great sized living room with a separate kitchen and bathroom. The property is in good condition but also offers great potential to modernise.

Tamar House is a stones throw away from Russell Square underground station and less than 10 minutes to King's Cross/St Pancras and Euston stations.

- Spacious One Bedroom • Secure Development • Lift Access •
- Central Location • Second Floor • Period Development •

# Frank Harris & Co.

## Second Floor



Total area: approx. 48.7 sq. metres (524.0 sq. feet)

Frank Harris & Co. Bloomsbury and Kings Cross  
81 Marchmont Street,  
London, WC1N 1AL  
020 7387 0077  
bloomsburylettings@frankharris.co.uk

Energy Rating: . We aim to make our particulars both accurate and reliable. However they are not guaranteed; nor do they form part of an offer or contract. If you require clarification on any points then please contact us, especially if you're traveling some distance to view. Please note that appliances and heating systems have not been tested and therefore no warranties can be given as to their good working order.