

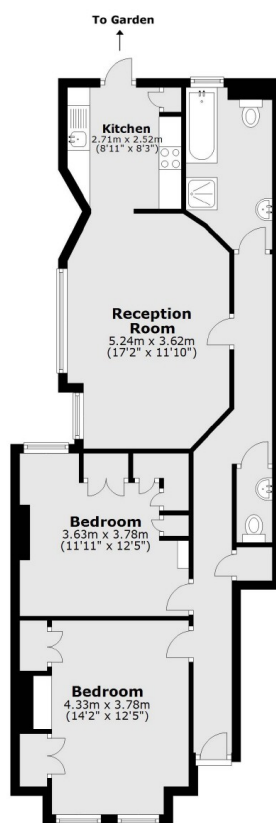


## Franciscan Road, SW17

£585,000

Located in the heart of Tooting Bec a two double bedroom period maisonette with private garden.

- Private Garden
- Two Double Bedroom
- Two Toilets
- Period Maisonette
- Potential To Extend STTP
- Long Lease

**Ground Floor**

Total area: approx. 74.7 sq. metres (804.4 sq. feet)

Jacksons Tooting  
26 Tooting Bec Road  
London  
SW17 8BD  
020 8767 0522  
[tooting.sales@jacksonsestateagents.com](mailto:tooting.sales@jacksonsestateagents.com)

Energy Rating: D We aim to make our particulars both accurate and reliable. However they are not guaranteed; nor do they form part of an offer or contract. If you require clarification on any points then please contact us, especially if you're traveling some distance to view. Please note that appliances and heating systems have not been tested and therefore no warranties can be given as to their good working order.