

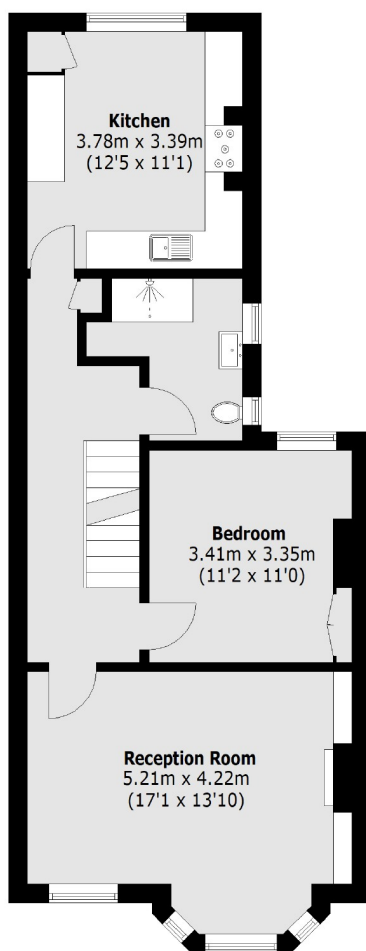
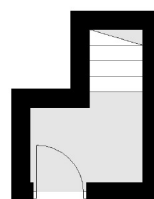
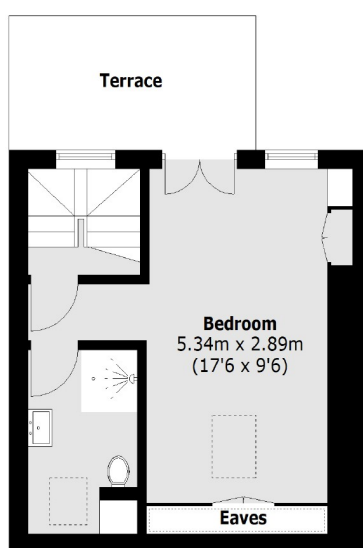


Eatonville Road, SW17

£725,000

A superb first floor split-level Edwardian conversion flat in excellent condition throughout. The property offers excellent living space by way of a large bright reception room to the front and a kitchen/breakfast room to the rear. There is a large double bedroom and a bathroom on the first floor and the loft has been converted to create a further double bedroom and modern shower room. The property also has a private terrace and a share of the freehold.

- Two Double Bedrooms
- Two Bathrooms
- Roof Terrace
- Edwardian Conversion
- Large Reception Room
- Share Of Freehold


First Floor

Ground Floor

Second Floor

Total area (approx.): 94.7 sq. m (1,019.2 sq. ft)
Terrace area: 8.5 sq. m (91.5 sq. ft)

Jacksons Balham
8-11 Balham Station Road
London
SW12 9SG
020 8675 6555
balham.sales@jacksonsestateagents.com

Energy Rating: We aim to make our particulars both accurate and reliable. However they are not guaranteed; nor do they form part of an offer or contract. If you require clarification on any points then please contact us, especially if you're traveling some distance to view. Please note that appliances and heating systems have not been tested and therefore no warranties can be given as to their good working order.