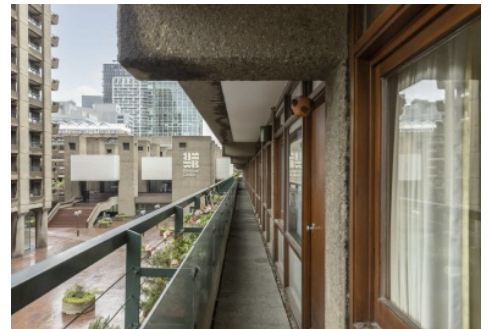


Frank Harris & Co.



Defoe House, EC2Y

£900,000

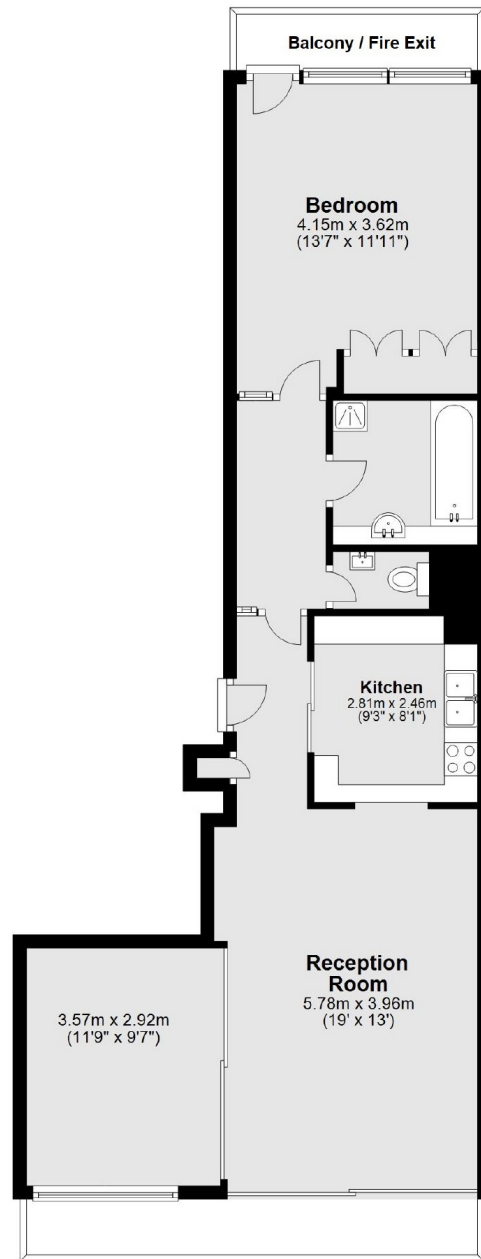
A second floor one bedroom flat known as a Type 20 overlooking the Barbican residents gardens. With the popular Brooke Marine kitchen, a divider in the reception room which could close off the area to create a second bedroom, an updated bathroom with a bath and shower cubicle, separate wc and the bedroom overlooking the podium with an extended lease.

Within walking distance of Barbican station and the new Crossrail access on Long lane.

- Type 20 • One Bedroom Flat • Brooke Marine Kitchen •
- Updated Bathroom • Extended Lease • No Onward Chain •

Frank Harris & Co.

Second Floor



Main area: Approx. 72.1 sq. metres (775.7 sq. feet)

Frank Harris & Co. Barbican and City
87 Long Lane, London,
EC1A 9ET
020 7600 7000
citysales@frankharris.co.uk

Energy Rating: TBC. We aim to make our particulars both accurate and reliable. However they are not guaranteed; nor do they form part of an offer or contract. If you require clarification on any points then please contact us, especially if you're traveling some distance to view. Please note that appliances and heating systems have not been tested and therefore no warranties can be given as to their good working order.