



Priory Road, Wolston
Asking Price £450,000

complete 
ESTATE AGENTS

Priory Road, Wolston, Coventry

Complete Estate Agents are pleased to bring to the market this unique barn style property on the outskirts of Wolston Village.' Nestled in this quiet courtyard 'Baille Barn' is a two storey property currently being finished to a high specification and boasts a wealth of character and charm. All the benefits of modern living including fully fitted kitchen with built in appliances, en suite to master bedroom, study, underfloor heating to ground floor, private rear garden and two car parking spaces. Completion of the property August 2021.

Entrance Hall

Kitchen / Breakfast Room 15'10" x 12'5"
(4.827 x 3.81)

Cloakroom

Study 9'6" x 8'6" (2.90 x 2.61)

Lounge 17'9" x 19'0" (5.42 x 5.81)

First Floor Landing

Bedroom One 13'9" x 12'2" (4.20 x 3.717)

En Suite Shower Room



Bedroom Two 15'9" x 12'5" (4.81 x 3.79)

Bedroom Three 13'5" x 12'2" (4.11 x 3.71)

Bathroom

Rear Garden

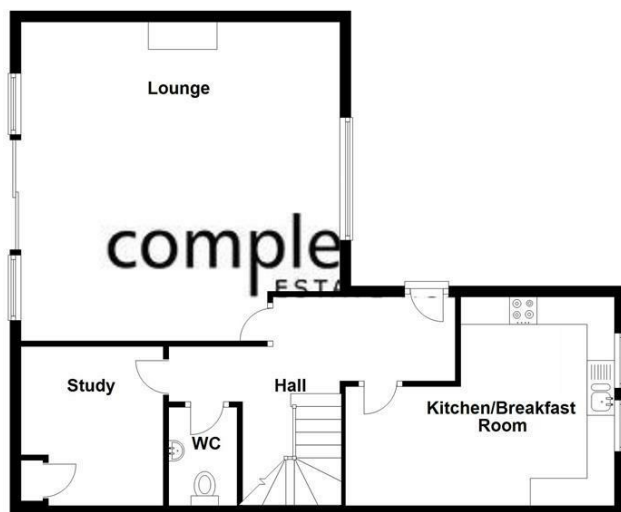
Courtyard Garden

Off Road Parking

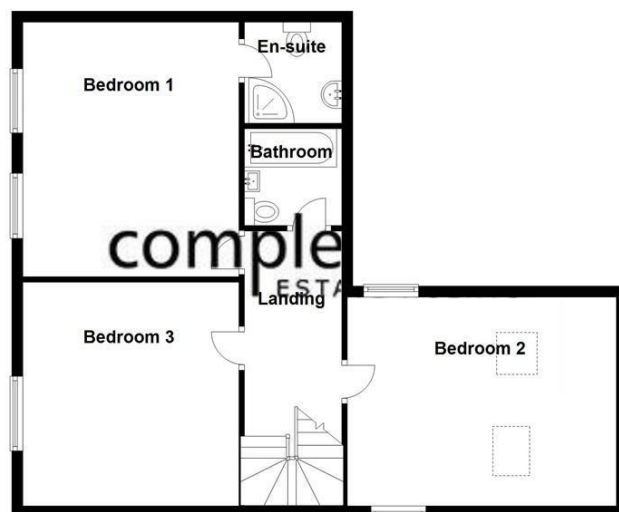




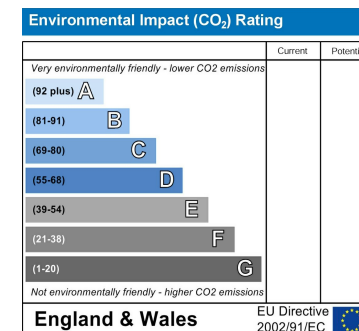
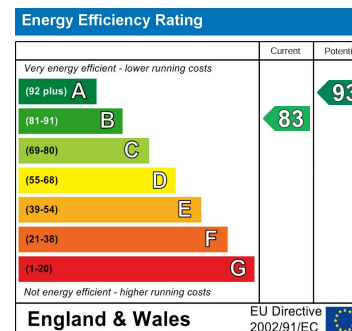
Ground Floor



First Floor



This floorplan is to be used as a guide only and not be taken as fact or to scale. The property may be different to actual diagram shown and square footage may differ.
Plan produced using PlanUp.



Misrepresentation Act 1967 - These particulars are believed to be correct but their accuracy is not guaranteed nor do they form part of any contract.

18 Church Street, Rugby, Warwickshire, CV21 3PU
T: 01788 550 800
sales@complete247.co.uk
www.complete247.co.uk

complete ● ● ●
ESTATE AGENTS