

FLETCHERS

ESTATE AGENTS



Fielding Road, W4

£1,600,000

Just off the Avenue on the upper reaches of Bedford Park, a fabulous recently refurbished four bedroom family house with superb entertaining areas and direct access to a sunny south-facing rear garden.

Fielding Road is a calm residential turning within easy reach of the wonderful array of shops, boutiques and restaurants on Chiswick High Road, with Turnham Green station and numerous bus routes also easily accessible.



This attractive four bedroom Victorian house is located on one of Chiswicks most popular and quiet tree lined residential roads on the border of the Bedford Park Conservation area, approximately six minutes walk to Turnham Green Underground Station and the shops along Chiswick High Road. The property is tastefully presented throughout with many attractive features including solid oak flooring, oak doors and interesting architectural touches. Downstairs provides a through reception room leading to a fabulous extended kitchen/dining room with custom built kitchen and large glass panelled doors out to the south facing garden. On the first floor are three double bedrooms and a bathroom then on the top floor a further double bedroom with modern shower room plus doors out to a small south facing balcony.

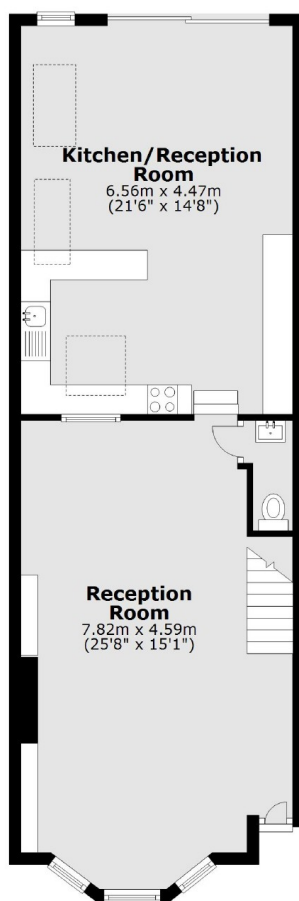
- Four Double Bedrooms • Large Family Bathroom • En-Suite Shower •
- Double Reception Room • South Facing Garden and Terrace • Solid Oak Flooring •



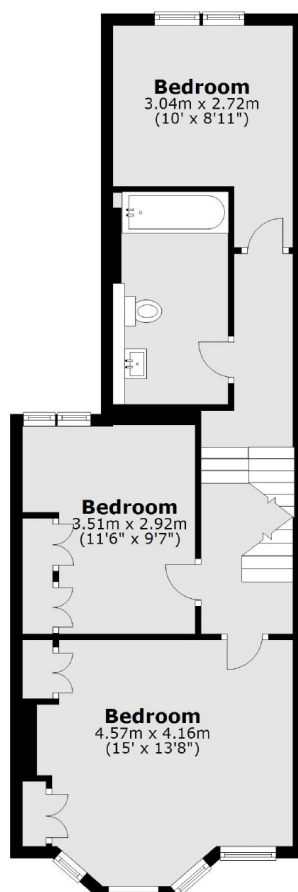
FLETCHERS

ESTATE AGENTS

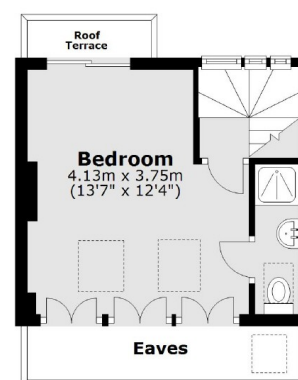
Ground Floor



First Floor



Second Floor



Main area: Approx. 138.0 sq. metres (1485.5 sq. feet)
Plus roof terrace, approx. 1.5 sq. metres (16.5 sq. feet)

Fletchers Chiswick Turnham Green Sales
58 Turnham Green Terrace, London, W4 1QP
020 8987 3000
chiswicksales@fletcherestates.com

Energy Rating: D. We aim to make our particulars both accurate and reliable. However they are not guaranteed; nor do they form part of an offer or contract. If you require clarification on any points then please contact us, especially if you're traveling some distance to view. Please note that appliances and heating systems have not been tested and therefore no warranties can be given as to their good working order.