

FLETCHERS

ESTATE AGENTS



Ernest Gardens, W4

£635,000

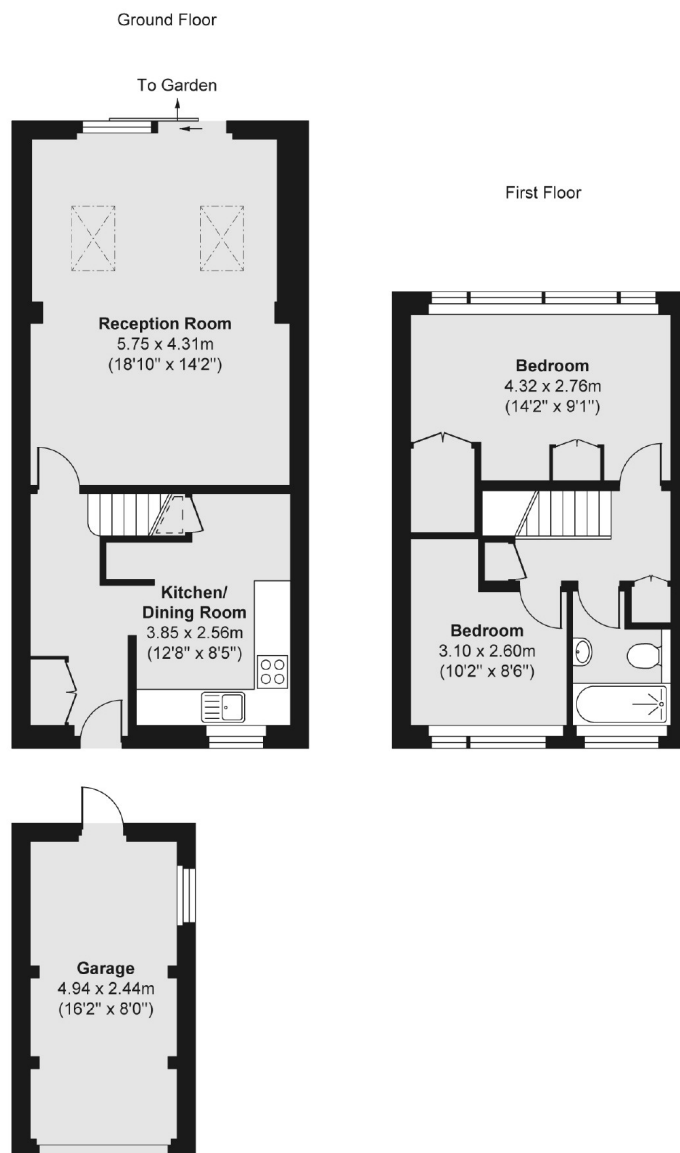
A freehold house offering spacious reception/entertaining space with a recently added rear extension, separate eat in kitchen and secluded private garden. The garage offers superb storage and has potential to be converted into a third bedroom/office.

Located on a residential cul-de-sac in the popular Strand on the Green area of Chiswick, only moments from the popular riverside pubs, cafés and restaurants and within the catchment area of Strand on the Green Junior School.

- Two Bedroom House • Modern Build • Extended Reception Room • Garage • Off Street Parking • Near the Thames •

FLETCHERS

ESTATE AGENTS



Total area (approx.) 71.08 sq. m (765 sq. ft)
Garage area (approx.) 12.05 sq. m (130 sq. ft)

Fletchers Chiswick Turnham Green Sales
58 Turnham Green Terrace, London, W4 1QP
020 8987 3000
chiswicksales@fletcherestates.com

Energy Rating: D. We aim to make our particulars both accurate and reliable. However they are not guaranteed; nor do they form part of an offer or contract. If you require clarification on any points then please contact us, especially if you're traveling some distance to view. Please note that appliances and heating systems have not been tested and therefore no warranties can be given as to their good working order.