

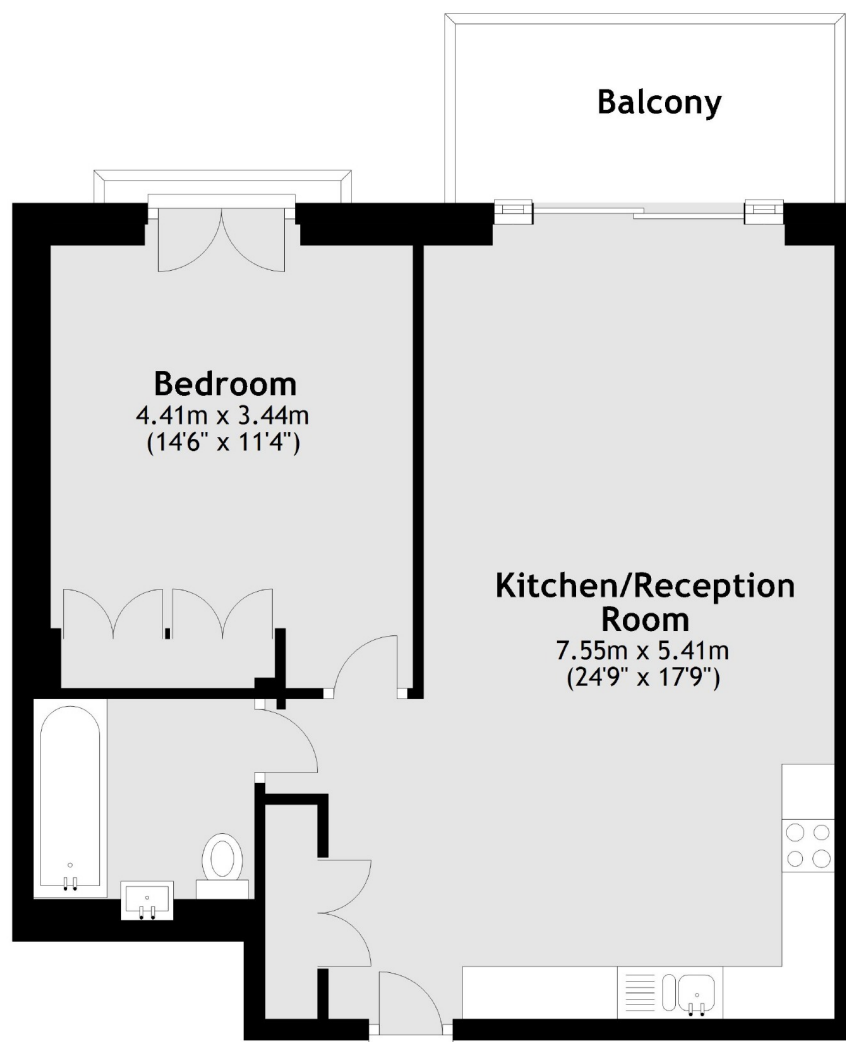


Cobalt Place, SW11

£530,000

A purpose built apartment within a secure and exclusive modern development in the heart of Battersea, close by Battersea Square and Battersea Park.

- Gated Development
- Near Battersea Square
- Allocated Parking
- Private Terrace
- High Specifications
- Under Floor Heating



Main area: Approx. 55.4 sq. metres (596.2 sq. feet)

Plus balconies, approx. 6.5 sq. metres (69.8 sq. feet)

Jacksons Clapham
73 Abbeville Road
London
SW4 9JN
020 8875 7995
clapham.sales@jacksonsestateagents.com

Energy Rating: B We aim to make our particulars both accurate and reliable. However they are not guaranteed; nor do they form part of an offer or contract. If you require clarification on any points then please contact us, especially if you're traveling some distance to view. Please note that appliances and heating systems have not been tested and therefore no warranties can be given as to their good working order.