



- Leasehold
- One double bedroom
- Recently refitted kitchen
- Communal gardens

Lichfield Gardens, Richmond

A spacious one bedroom ground floor apartment situated in a popular development in a convenient central Richmond location.

£450,000

Property Description

A spacious one double bedroom ground floor apartment situated in a popular development in a convenient central Richmond location. The living space comprises of a modern open-plan dual aspect kitchen/reception room with doors leading onto the communal gardens, a double bedroom with fitted storage space and well proportioned bathroom. There is also the added benefit of an allocated parking space.

Location

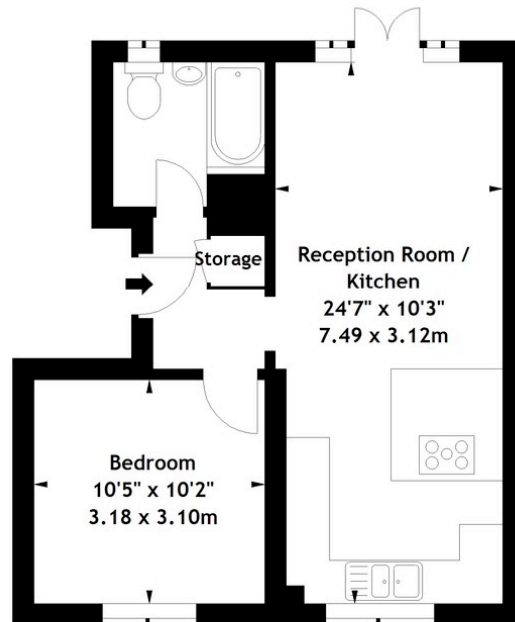
Lichfield Gardens is a highly sought after development situated in a leafy cul-de-sac location close to the centre of Richmond. There are all of Richmond's shops, restaurants and amenities within a close proximity along with Richmond Station, offering access to the tube, overground and mainline services. Richmond Green and Richmond Riverside are both close by.





Lichfield Gardens, TW9

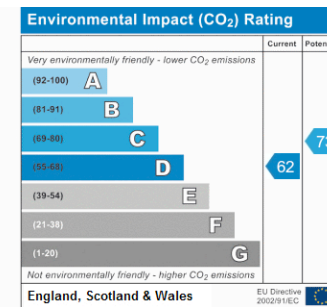
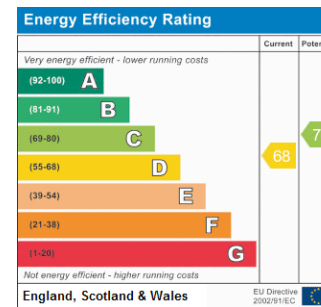
Approx. Gross Internal Area
462 Sq Ft - 42.97 Sq M



Ground Floor

Measured in accordance with RICS guidelines. Every attempt is made to ensure accuracy, however all measurements are approximate. This floor plan is for illustrative purposes only and is not to scale.

© Datagraphy Ltd 2018
Photographs * Floorplans * Virtual Tours
Tel: 0845 643 4401 www.datagraphy.com



www.griffinsteven.co.uk
020 8979 1597
enquiries@griffinsteven.co.uk

Agents Note: Whilst every care has been taken to prepare these sales particulars, they are for guidance purposes only. All measurements are approximate and are for general guidance purposes only and whilst every care has been taken to ensure their accuracy, they should not be relied upon and potential buyers are advised to recheck the measurements