



- Share of freehold
- Large private rear garden
- Potential to extend
- Ground floor

## Plevna Road, Hampton

A stunning period ground floor garden flat in a fabulous village location.

£385,000





## Property Description

A stunning period ground floor garden flat in a fabulous village location. The property has charm and character throughout benefitting from sash windows, its own private entrance and a larger than average private rear garden. The living space comprises of a bay fronted reception room, double bedroom, modern kitchen breakfast room, utility room and contemporary bathroom. Further benefits include a larger than average rear garden with storage shed and approved planning permission to extend and create a second bedroom (Planning application number **18/1854/HOT**).

## Location

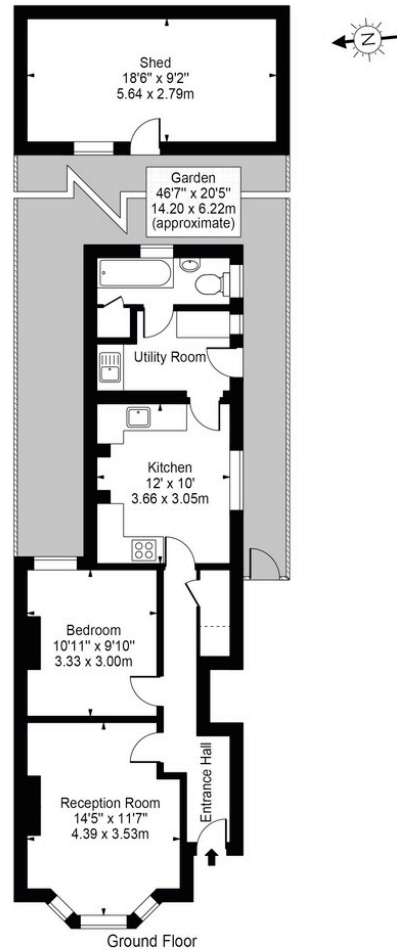
Plevna Road is highly sought after residential road in Hampton Village close to Hampton Village Green, Waitrose and Hampton Station. Hampton Pool, the River Thames and the royal grounds of Bushy Park are close by along with some excellent local schools.





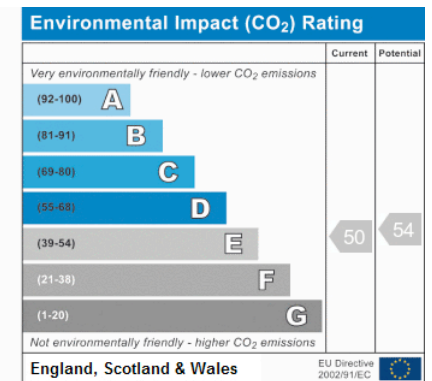
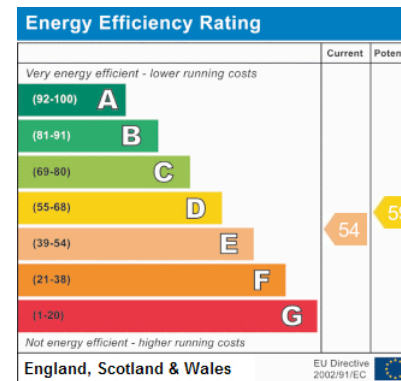


Plevna Road, TW12  
 Approx. Gross Internal Area 584 Sq Ft - 54.26 Sq M  
 (Excluding Shed)  
 Approx. Gross Internal Area Of Shed 169 Sq Ft - 15.74 Sq M



For Illustration Purposes Only - Not To Scale Floor Plan by Mira Nikolova Photography

This floor plan should be used as a general outline for guidance only and does not constitute in whole or in part an offer or contract.  
 Any intending purchaser or lessee should satisfy themselves by inspection, searches, enquiries and full survey as to the correctness of each statement.  
 Any areas, measurements or distances quoted are approximate and should not be used to value a property or be the basis of any sale or let.



www.griffinsteven.co.uk  
 020 8979 1597  
 enquiries@griffinsteven.co.uk

Agents Note: Whilst every care has been taken to prepare these sales particulars, they are for guidance purposes only. All measurements are approximate are for general guidance purposes only and whilst every care has been taken to ensure their accuracy, they should not be relied upon and potential buyers are advised to recheck the measurements