



- Share of freehold
- Two double bedrooms
- Private garage
- Communal gardens

Thirlestane House, Hampton

A larger than average two double bedroom second floor apartment situated in a convenient location.

£350,000



Property Description

A larger than average two double bedroom second floor apartment situated in a convenient location.

The living space comprises a front door to entrance hall, fitted kitchen, a modern bathroom, two double bedrooms and a spacious reception room with a Juliette balcony overlooking the communal gardens. Further benefits include a share of the freehold, private garage and pretty well maintained communal gardens leading to the Longford River.

Location

Uxbridge Road is a convenient location situated in Hampton Hill which is close to the High Street, Fulwell Golf Course and Fulwell Station. The royal grounds of Bushy Park are close by along with some outstanding rated local schools.

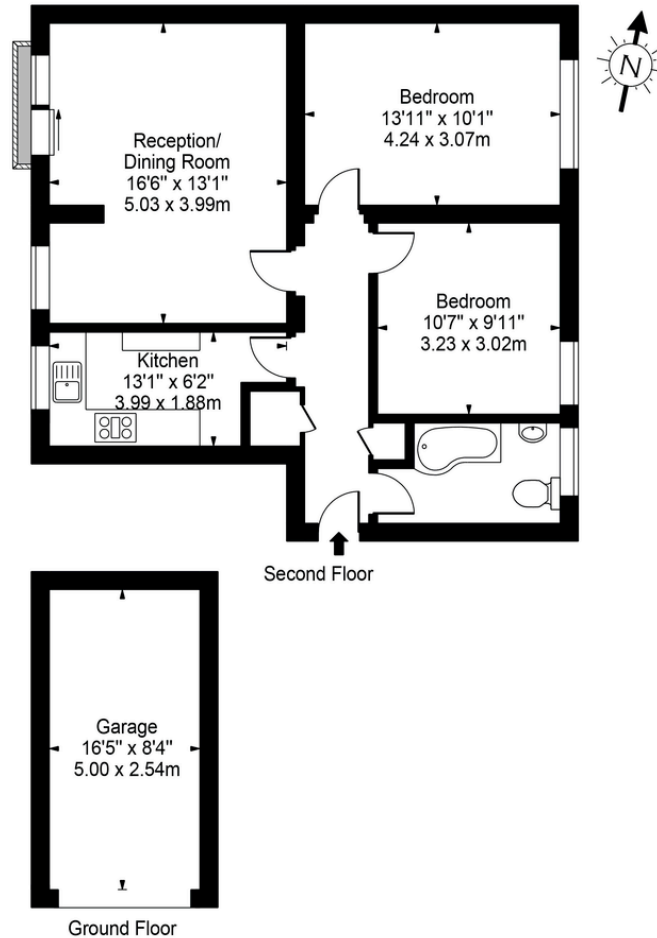




Thirlestane House, TW12

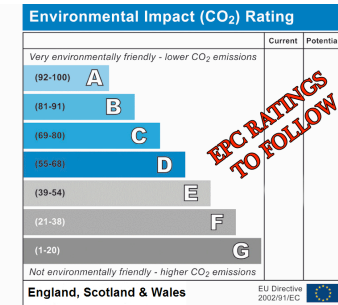
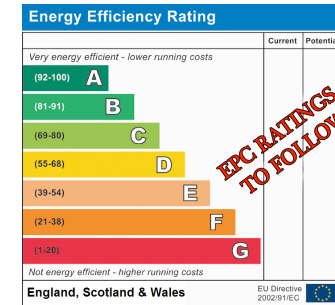
Approx. Gross Internal Area 711 Sq Ft - 66.05 Sq M
(Excluding Garage)

Approx. Gross Internal Area Of Garage 137 Sq Ft - 12.70 Sq M



For Illustration Purposes Only - Not To Scale Floor Plan by Mira Nikolova Photography

This floor plan should be used as a general outline for guidance only and does not constitute in whole or in part an offer or contract.
Any intending purchaser or lessee should satisfy themselves by inspection, searches, enquiries and full survey as to the correctness of each statement.
Any areas, measurements or distances quoted are approximate and should not be used to value a property or be the basis of any sale or let.



www.griffinstevens.co.uk
020 8979 1597
enquiries@griffinstevens.co.uk

Agents Note: Whilst every care has been taken to prepare these sales particulars, they are for guidance purposes only. All measurements are approximate and are for general guidance purposes only and whilst every care has been taken to ensure their accuracy, they should not be relied upon and potential buyers are advised to recheck the measurements