



- Victorian conversion flat
- Long lease
- Two double bedrooms
- Good decorative order throughout

## Hanworth Road, Hampton

A two double bedroom first floor Victorian conversion flat in excellent order throughout.

£375,000

## Property Description

A two double bedroom first floor Victorian conversion flat in excellent order throughout benefiting from high ceilings and wood flooring. The living space comprises a modern eat-in kitchen/breakfast room, spacious reception room, two well proportioned double bedrooms and a family bathroom. Further benefits include a long lease and the potential to extend (subject to planning permission and the usual consents).

### Location

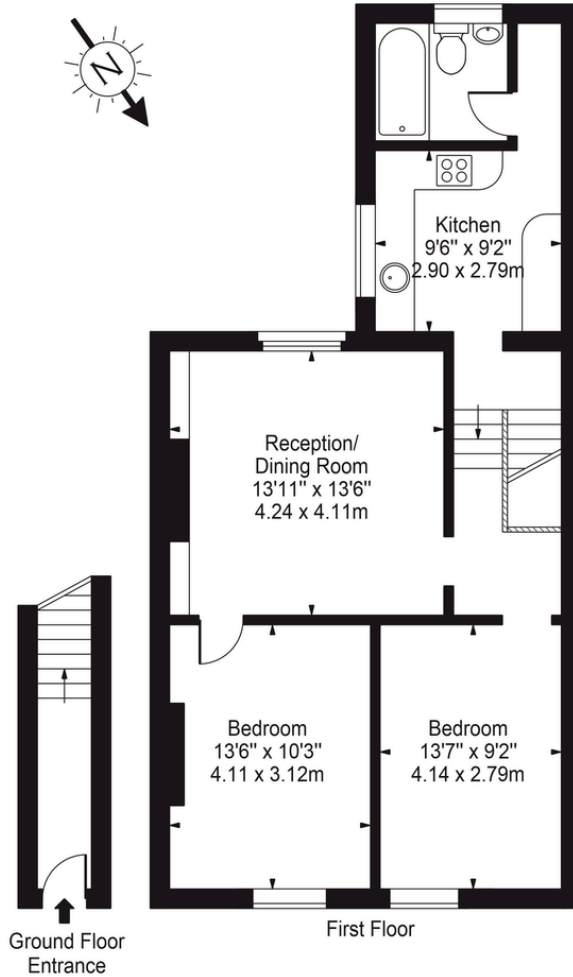
The property is conveniently located being close to the Hampton Hill High Street with its array of shops, restaurants and cafes. The royal grounds of Bushy Park and the River Thames are both close by along with some outstanding local schools.





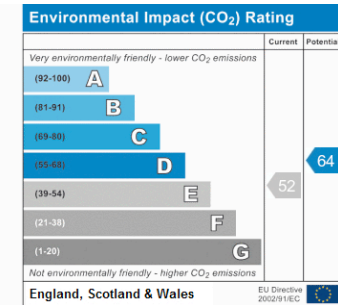
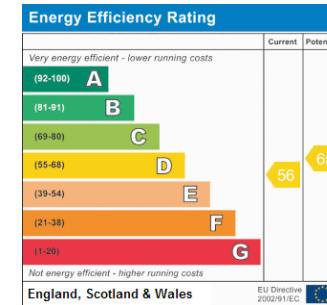
# Hanworth Road, TW12

Approx. Gross Internal Area 751 Sq Ft - 69.77 Sq M



For Illustration Purposes Only - Not To Scale Floor Plan by Mira Nikolova Photography

This floor plan should be used as a general outline for guidance only and does not constitute in whole or in part an offer or contract. Any intending purchaser or lessee should satisfy themselves by inspection, searches, enquiries and full survey as to the correctness of each statement. Any areas, measurements or distances quoted are approximate and should not be used to value a property or be the basis of any sale or let.



www.griffinsteven.co.uk  
020 8979 1597  
enquiries@griffinsteven.co.uk

Agents Note: Whilst every care has been taken to prepare these sales particulars, they are for guidance purposes only. All measurements are approximate are for general guidance purposes only and whilst every care has been taken to ensure their accuracy, they should not be relied upon and potential buyers are advised to recheck the measurements