



- Freehold
- Self-contained annex
- Four bedrooms
- Sought after location

## Rosecroft Gardens, Twickenham

A beautifully presented three/four bedroom semi-detached bungalow in a sought after location.

£650,000





## Property Description

A beautifully presented three/four bedroom semi-detached bungalow in a sought after location. The property is in excellent order throughout and the living space comprises a reception room with feature fireplace, dining area, a modern kitchen/breakfast room, two double bedrooms; both with fitted wardrobes, and a family bathroom with original tiles. The first floor has a bright and spacious master bedroom with dual aspect windows, a walk-in wardrobe and en-suite bathroom. To the rear there is a self-contained annex complete with a contemporary kitchen/reception room, shower room, and bedroom. Further benefits include a front garden, side access, and a large rear garden with a private decked area overlooking the The Duke of Northumberlands River.

Rosecroft Gardens is situated within the sought after Rosebine Estate, a convenient location off the Chertsey Road which provides easy access to central London and the M3 Motorway. The property is within close proximity to the popular Twickenham High Street with its array of shops, bars and restaurants, as well as the recreational grounds of Kneller Gardens. Twickenham and Whitton Mainline Stations are also close by, as well as some excellent local schools.



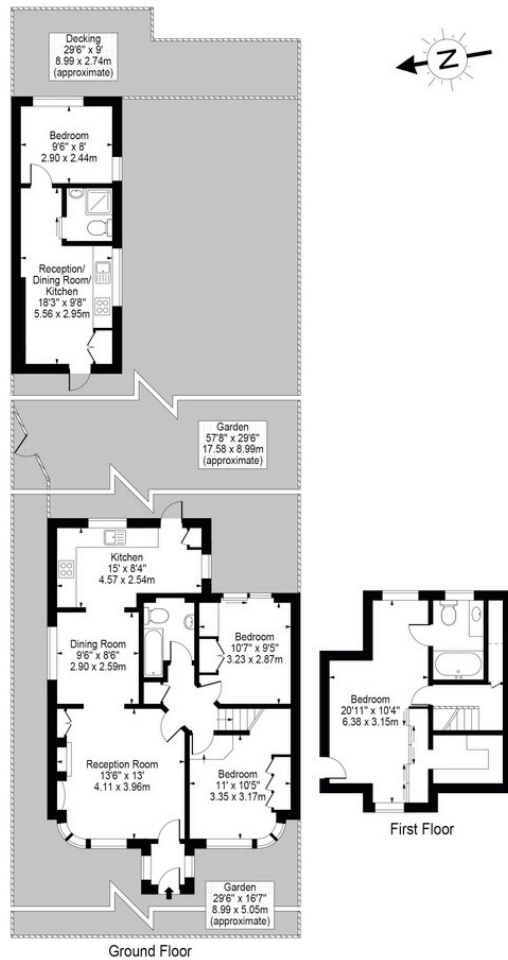






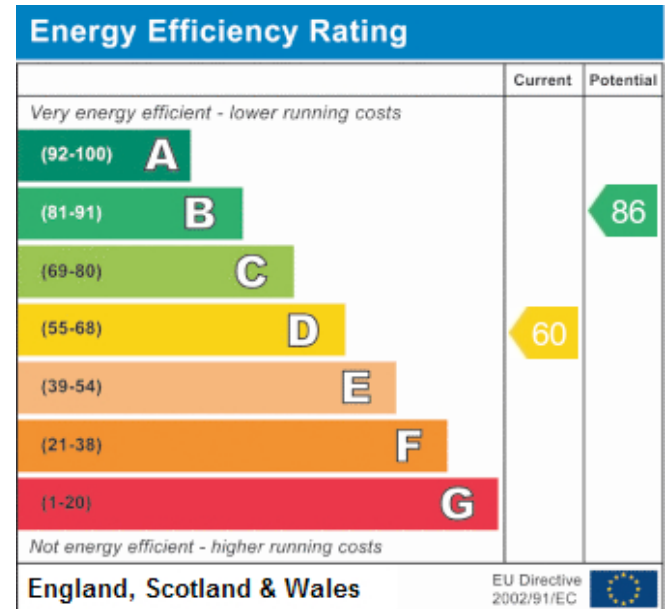
## Rosecroft Gardens, TW2

Approx. Gross Internal Area 1045 Sq Ft - 97.08 Sq M  
(Excluding Summer House)  
Approx. Gross Internal Area Of Summer House 254 Sq Ft - 23.60 Sq M



For Illustration Purposes Only - Not To Scale Floor Plan by Mira Nikolova Photography

This floor plan should be used as a general outline for guidance only and does not constitute in whole or in part an offer or contract.  
Any intending purchaser or lessee should satisfy themselves by inspection, searches, enquiries and full survey as to the correctness of each statement.  
Any areas, measurements or distances quoted are approximate and should not be used to value a property or be the basis of any sale or let.



www.griffinstevens.co.uk  
020 8979 1597  
enquiries@griffinstevens.co.uk

Agents Note: Whilst every care has been taken to prepare these sales particulars, they are for guidance purposes only. All measurements are approximate and are for general guidance purposes only and whilst every care has been taken to ensure their accuracy, they should not be relied upon and potential buyers are advised to recheck the measurements