



- Freehold
- Semi-detached
- Potential to extend
- Three bedrooms

## Cleveland Avenue, Hampton

A beautifully presented 1930s semi-detached family home situated in a central Hampton Village location.

£775,000





## Property Description

A beautifully presented 1930s semi-detached family home situated in a central Hampton Village location. The property is in good order throughout and benefits from all of the features you would expect, including high ceilings, feature fireplaces and bay windows.

The living space on the ground floor comprises a front door to wide entrance hall, a well proportioned bay-fronted reception room, an extended kitchen/dining room with bi-fold doors leading to the garden and a downstairs WC. The first floor offers three bedrooms; the master with fitted wardrobes and a modern family bathroom. Further benefits include a large rear garden with decking area ideal for entertaining and scope to extend into the loft (subject to planning permission and the usual consents).

## Location

Cleveland Avenue is a quiet, highly sought after road located off Holly Bush Lane and is close to Hampton Infants School and Hampton Junior School. Hampton Station, the River Thames and Hampton Village with its array of shops, restaurants and cafes are all close by.



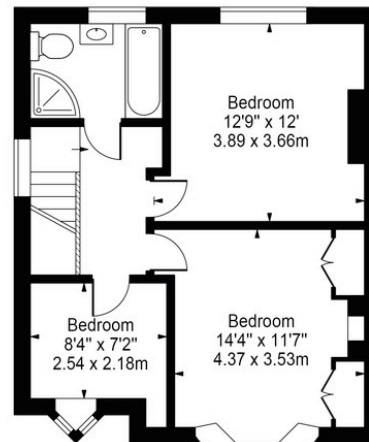
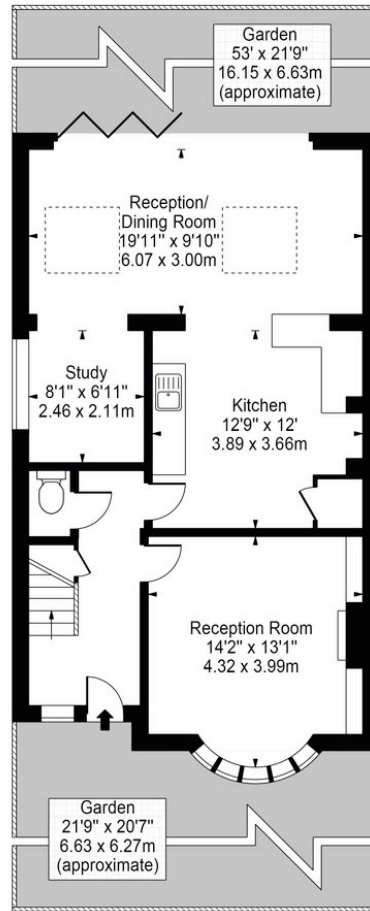






# Cleveland Avenue, TW12

Approx. Gross Internal Area 1218 Sq Ft - 113.16 Sq M

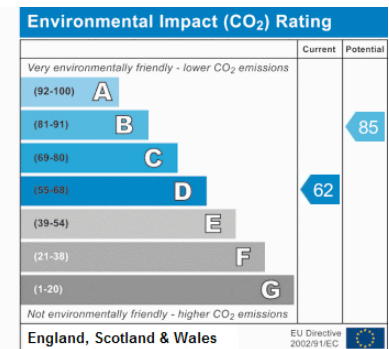
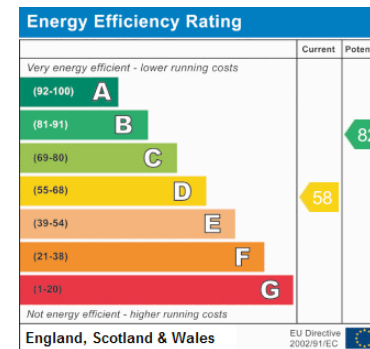


First Floor

Ground Floor

For Illustration Purposes Only - Not To Scale Floor Plan by Mira Nikolova Photography

This floor plan should be used as a general outline for guidance only and does not constitute in whole or in part an offer or contract. Any intending purchaser or lessee should satisfy themselves by inspection, searches, enquiries and full survey as to the correctness of each statement. Any areas, measurements or distances quoted are approximate and should not be used to value a property or be the basis of any sale or let.



www.griffinstevens.co.uk  
020 8979 1597  
enquiries@griffinstevens.co.uk

Agents Note: Whilst every care has been taken to prepare these sales particulars, they are for guidance purposes only. All measurements are approximate and are for general guidance purposes only and whilst every care has been taken to ensure their accuracy, they should not be relied upon and potential buyers are advised to recheck the measurements