

# FLETCHERS

ESTATE AGENTS



## Bayham Road, W4

£923 Per week (£4,000 pcm)

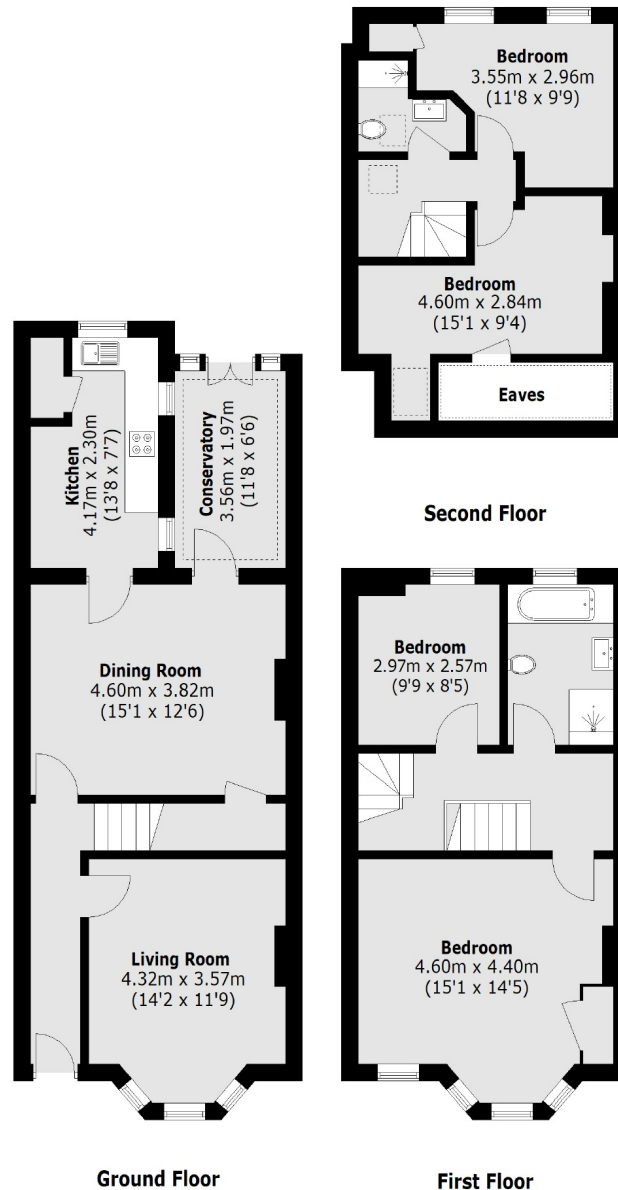
A four bedroom family home with reception room and spacious dining room with traditional period features leading through to a kitchen and separate conservatory. The property benefits from storage and a south facing garden.

Bayham Road is conveniently located close to Turnham Green Terrace and a short walk to Chiswick High Road.

- Four bedrooms • Two reception rooms • South facing garden • Period features • Conservatory room • Two bathrooms •

# FLETCHERS

## ESTATE AGENTS



Total area (approx.): 129.4 sq. m (1,392.9 sq. ft)  
(Excluding Eaves)

Fletchers Chiswick High Road Lettings  
86 Chiswick High Road, Chiswick, London, W4 1SY  
020 8742 4100  
[chiswicklettings@fletcherstates.com](mailto:chiswicklettings@fletcherstates.com)

Energy Rating: D. We aim to make our particulars both accurate and reliable. However they are not guaranteed; nor do they form part of an offer or contract. If you require clarification on any points then please contact us, especially if you're traveling some distance to view. Please note that appliances and heating systems have not been tested and therefore no warranties can be given as to their good working order.