

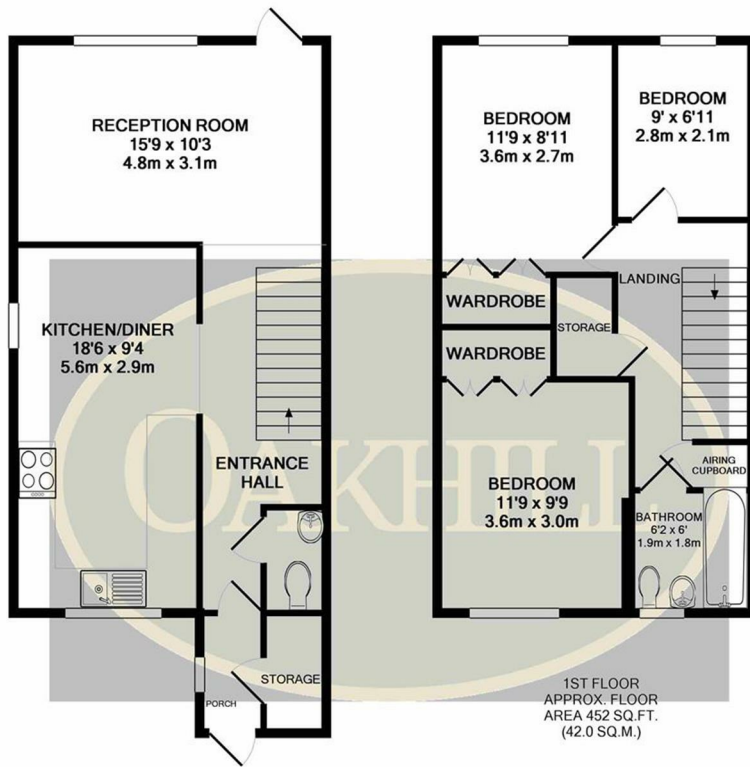


Stanborough Road, Hounslow, Middlesex TW3 1YQ

A spacious three bedroom house located on a quiet cul-de-sac on the border of Hounslow/Isleworth. Downstairs offers modern kitchen with dining area, living area, direct access to private south-facing garden and W/C. The upstairs consists of two double bedrooms with fitted storage, and one single bedroom. Ample storage and a family bathroom are also offered.

Stanborough Road is located within easy access to Hounslow East Underground Station, and within easy reach to many local primary and secondary schools.

£1,550 PER MONTH



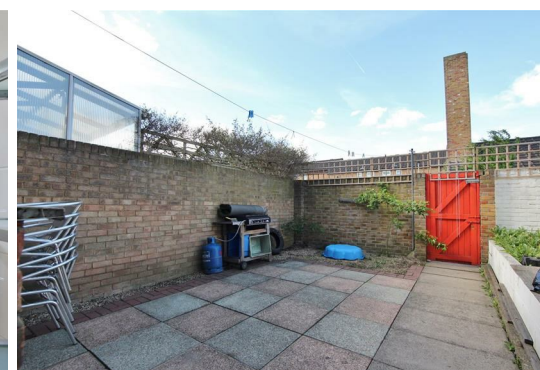
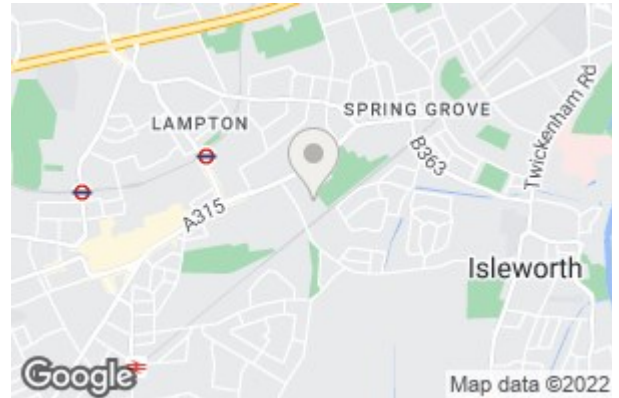
GROUND FLOOR
APPROX. FLOOR AREA 491 SQ.FT. (45.6 SQ.M.)

TOTAL APPROX. FLOOR AREA 943 SQ.FT. (87.6 SQ.M.)

Whilst every attempt has been made to ensure the accuracy of the floor plan contained here, measurements of doors, windows, rooms and any other items are approximate and no responsibility is taken for any error, omission, or mis-statement. This plan is for illustrative purposes only and should be used as such by any prospective purchaser. The services, systems and appliances shown have not been tested and no guarantee as to their operability or efficiency can be given
Made with Metropix ©2019

Energy Efficiency Rating	
Current	Potential
Very energy efficient - lower running costs	
(92 plus) A	88
(81-91) B	
(69-80) C	
(55-68) D	
(39-54) E	
(21-38) F	
(1-20) G	
Not energy efficient - higher running costs	
England & Wales	EU Directive 2002/91/EC

Environmental Impact (CO ₂) Rating	
Current	Potential
Very environmentally friendly - lower CO ₂ emissions	
(92 plus) A	88
(81-91) B	
(69-80) C	
(55-68) D	
(39-54) E	
(21-38) F	
(1-20) G	
Not environmentally friendly - higher CO ₂ emissions	
England & Wales	EU Directive 2002/91/EC



6 South Street, Isleworth, TW7 7BG
Tel: 0208 568 4433
info@oakhillagents.co.uk
www.oakhillagents.co.uk

OAKHILL