

Toddington Office:

01525 877 300



HOUSEHOLD
estate agents

Residential Sales • Property Management • Lettings

11 Witham Court, Bletchley, Buckinghamshire, MK3 7QU

£750 Per Calendar Month



You will need to be quick to view this well presented one bedroom bungalow in the Bletchley area of Milton Keynes. The bungalow is available to rent with immediate effect and is to be rented on an unfurnished basis. The bathroom and kitchen are of a modern standard and there is laminate flooring throughout. Ample parking within the development. CALL TODAY TO VIEW.

• Bungalow • One Bedroom • Double Glazed • Modern Kitchen • Modern Bathroom • Small Garden • Parking • Available Now • Unfurnished

For details on all of our properties for sale and for rent visit www.house-hold.co.uk

PRS Property
Redress
Scheme

Zoopla.co.uk

movewithus
recommended agent

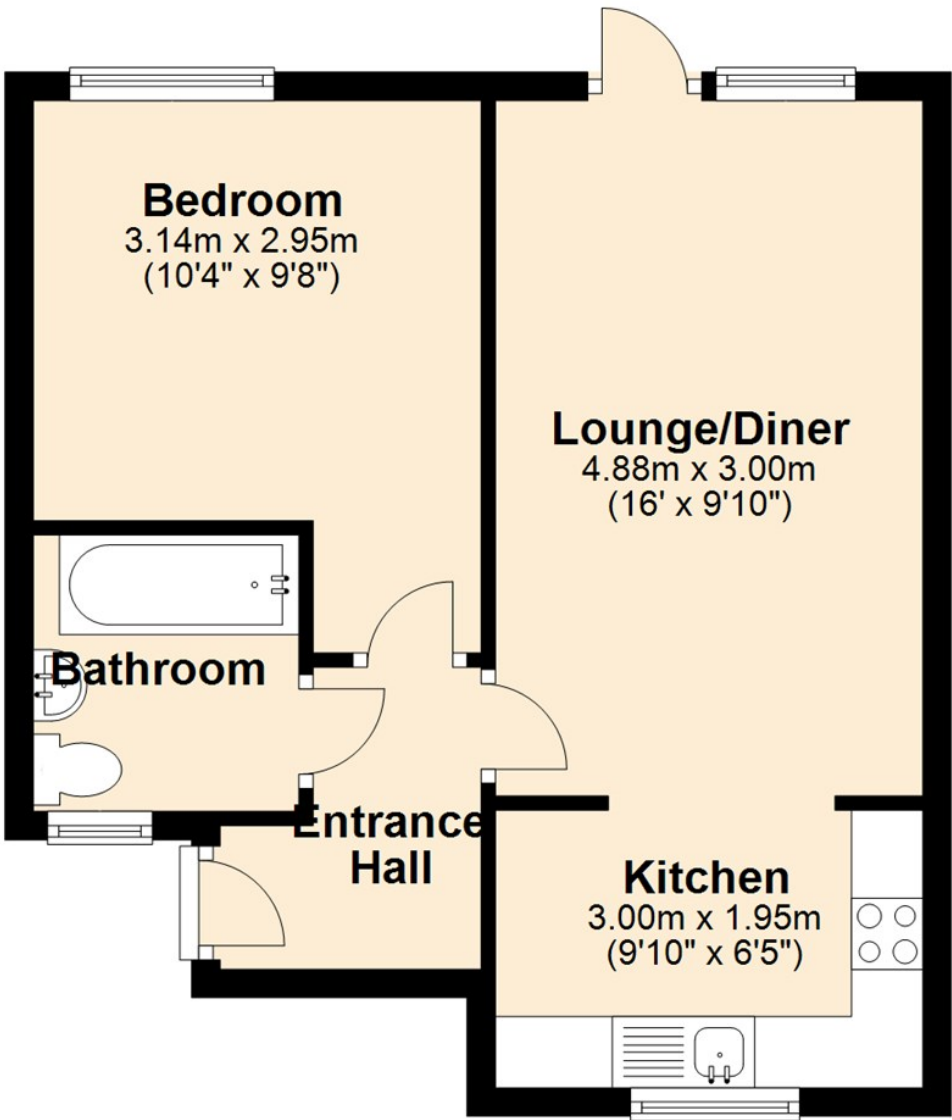
nTheMarket.com

rightmove
find your happy

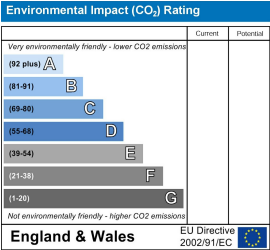
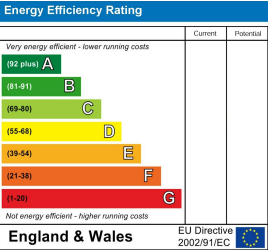
The Property Experts with the Personal Touch

Floor Plan

Ground Floor



EPC



address: 2-4 High Street, Toddington, Bedfordshire LU5 6BY Additional Office: Dunstable: 15b High Street North - 01582 608 911

telephone: 01525 877 300

email: lettings@house-hold.co.uk

website: www.house-hold.co.uk

The Property Experts with the Personal Touch

MISDESCRIPTIIONS ACT: Household Estate Agents Ltd. For themselves and for the vendors of this property, whose agents they are, give notice that the particulars are set out as a general outline only for the guidance of intended purchasers and do not constitute or constitute part of any offer or contract. All descriptions, dimensions reference to condition and necessary permissions for use and occupation and other details are given without responsibility, and any intending purchasers should not rely upon them as statements or representations of fact but must satisfy themselves by inspection or otherwise as to their correctness. No person in the employment of Household Estate Agents Limited has any authority to give or make any representation or warranty whatsoever in relation to this property.