

Toddington Office:

01525 877 300

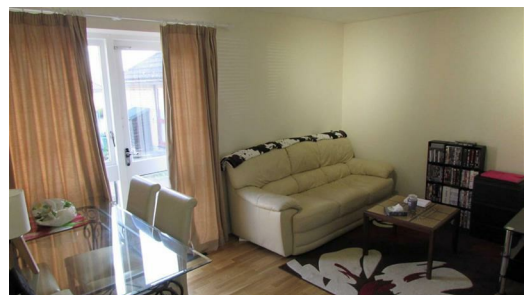


HOUSEHOLD
estate agents

Residential Sales • Property Management • Lettings

48 Tweed Drive, Bletchley, MK3 7QR

£775 Per Calendar Month



* EXCLUSIVE TO HOUSEHOLD LETTING AGENTS AVAILABLE NOW *
this modern one bedroom bungalow located within Bletchley.
The bungalow has been modernised throughout and comes with a fully fitted kitchen with white goods and a refitted bathroom suite CALL NOW TO VIEW.*
tenants fees may apply further details available upon request from agents *

• One Bedroom Bungalow • Available NOW • Modern
Fitted Kitchen • Bath Room • Garden • Quiet
Location • Unfurnished • Parking

For details on all of our properties for sale and for rent visit **www.house-hold.co.uk**

PRS Property
Redress
Scheme

Zoopla.co.uk

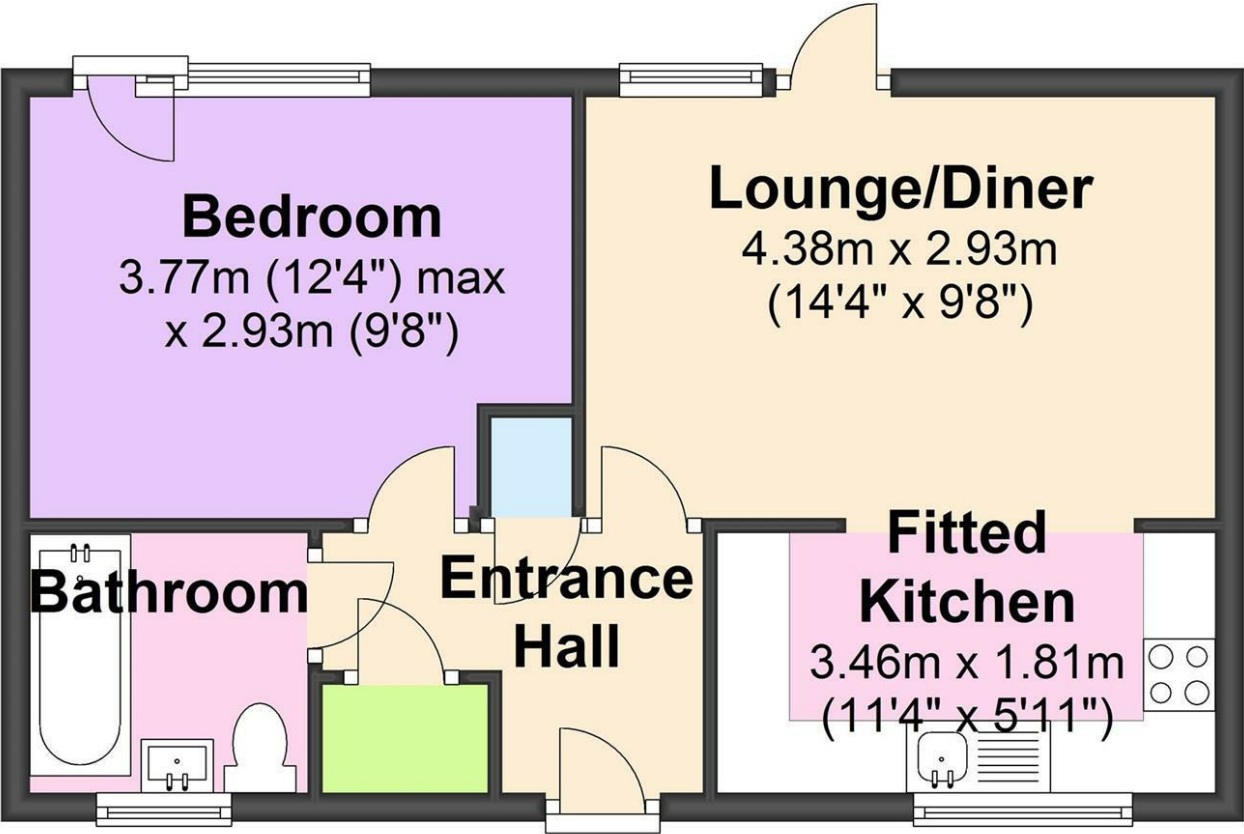
movewithus
recommended agent

onTheMarket.com

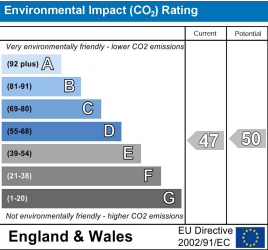
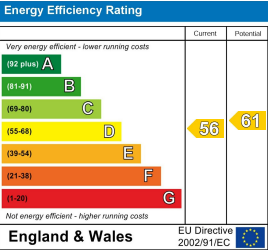
rightmove
find your happy

The Property Experts with the Personal Touch

Ground Floor



EPC



address: 2-4 High Street, Toddington, Bedfordshire LU5 6BY Additional Office: Dunstable: 15b High Street North - 01582 608 911

telephone: 01525 877 300

email: lettings@house-hold.co.uk

website: www.house-hold.co.uk

The Property Experts with the Personal Touch

MISDESCRIPTIIONS ACT: Household Estate Agents Ltd. For themselves and for the vendors of this property, whose agents they are, give notice that the particulars are set out as a general outline only for the guidance of intended purchasers and do not constitute or constitute part of any offer or contract. All descriptions, dimensions reference to condition and necessary permissions for use and occupation and other details are given without responsibility, and any intending purchasers should not rely upon them as statements or representations of fact but must satisfy themselves by inspection or otherwise as to their correctness. No person in the employment of Household Estate Agents Limited has any authority to give or make any representation or warranty whatsoever in relation to this property.