

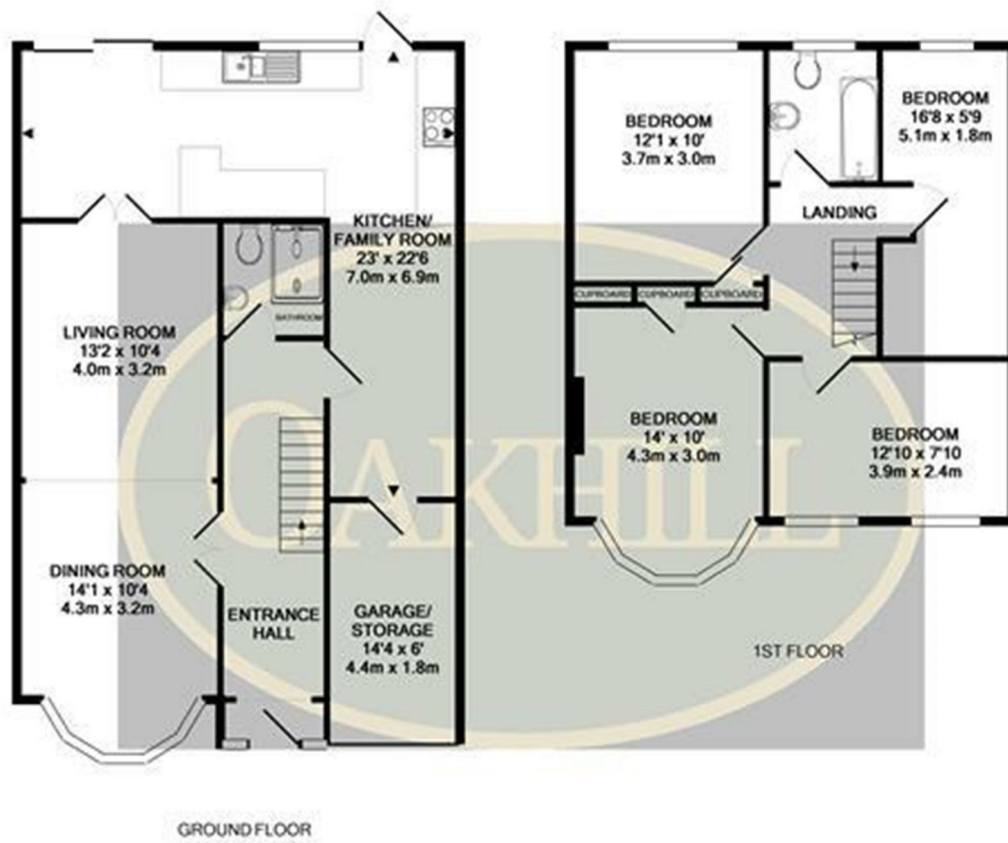


Pembridge Avenue, Twickenham, Middlesex TW2 6AE

A stunning four double bedroom extended family home situated on the popular Woodlawn development in Twickenham. The downstairs offers a welcoming hallway through to double through living area, and spacious modern kitchen with room for dining. The upstairs consists of four double bedrooms and fitted family bathroom. Further benefiting a downstairs luxury shower room, rear landscaped garden and garage perfect for storage.

Located within walking distance to Whitton High Street with a wide range of shops for your convenience and Whitton mainline Station which serves London Waterloo.

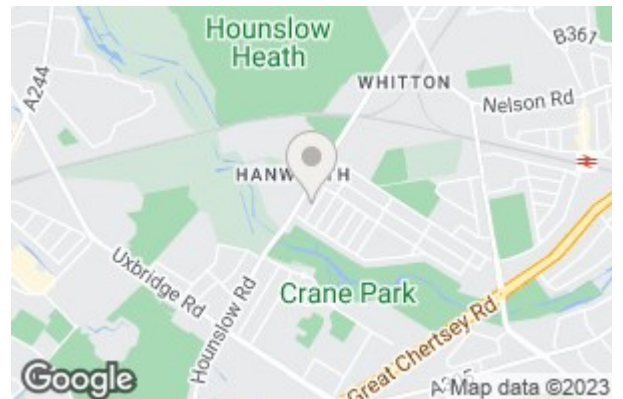
£2,100 PER MONTH



Whilst every attempt has been made to ensure the accuracy of the floor plan contained here, measurements of doors, windows, rooms and any other items are approximate and no responsibility is taken for any error, omission, or mis-statement. This plan is for illustrative purposes only and should be used as such by any prospective purchaser. The services, systems and appliances shown have not been tested and no guarantee as to their operability or efficiency can be given.
Made with Metropix ©2018

Energy Efficiency Rating		Current	Potential
Very energy efficient - lower running costs			
(92 plus) A			
(81-91) B			
(69-80) C			
(55-68) D		53	63
(39-54) E			
(21-38) F			
(1-20) G			
Not energy efficient - higher running costs			
England & Wales	EU Directive 2002/91/EC		

Environmental Impact (CO ₂) Rating		Current	Potential
Very environmentally friendly - lower CO ₂ emissions			
(92 plus) A			
(81-91) B			
(69-80) C			
(55-68) D		46	56
(39-54) E			
(21-38) F			
(1-20) G			
Not environmentally friendly - higher CO ₂ emissions			
England & Wales	EU Directive 2002/91/EC		



6 South Street, Isleworth, TW7 7BG
 Tel: 0208 568 4433
 info@oakhillagents.co.uk
 www.oakhillagents.co.uk

OAKHILL