



Duntshill Road, SW18

£785,000

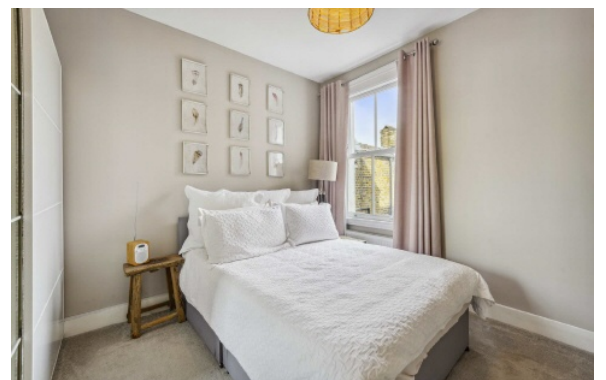
A superbly presented three bedroom, two bath, split level period maisonette with private rear garden and is situated 0.2 miles from Earlsfield mainline station.

- Three Bedrooms
- En-suite Shower Room & WC
- Edwardian Maisonette
- Private Garden
- Excellent Condition
- Sought After Location

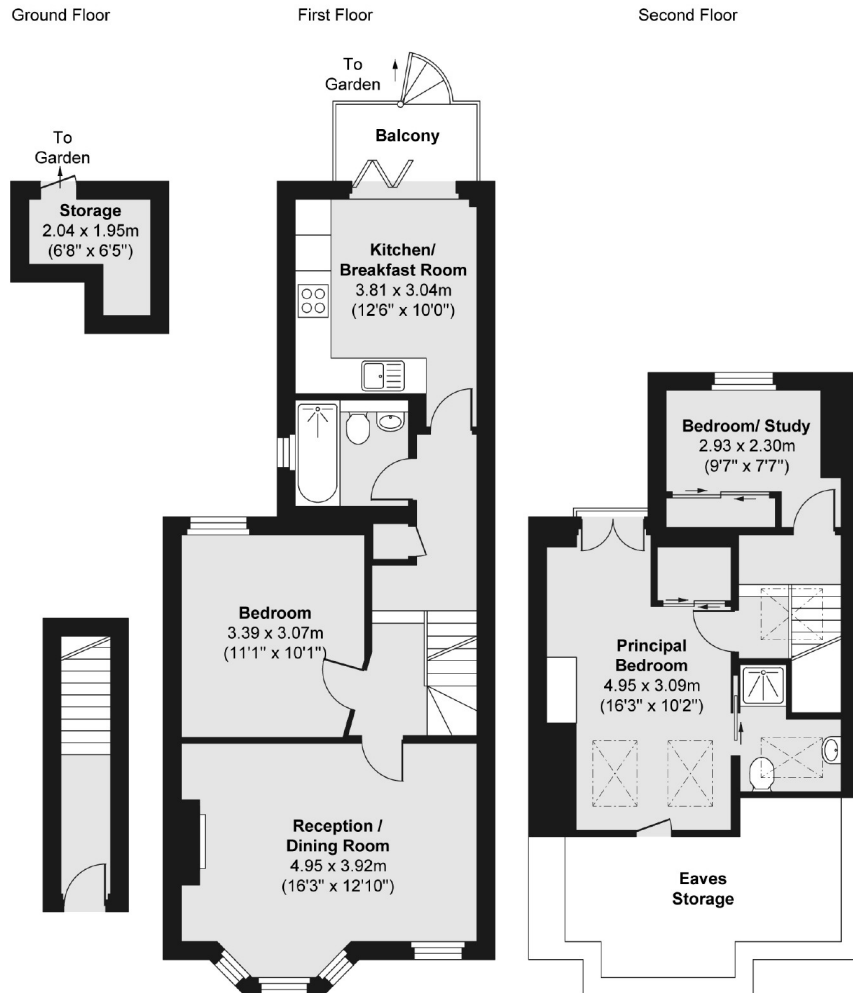


Fully extended to an excellent standard throughout, offering generous living spaces. Accommodation comprises; own front door, entrance hall with stairs leading to the first floor landing, full width reception room, beautifully presented kitchen/dining room offering a great entertaining space, which leads to a terrace area with a spiral staircase to the private garden and useful outside storage cupboard. The property boasts three bedrooms; the third currently being used as a study/home office, impressive family bathroom and a master bedroom with en-suite.

The property is located on one of Earlsfield's most sought after residential roads, being within easy reach of Earlsfield Primary School, Earlsfield mainline station and Garratt Lane's array of amenities. Furthermore, King George's park is just a short walk from the property with its green open spaces.







Total area (approx.) 84.87 sq. m (914 sq. ft)
 Balcony area (approx.) 3.04 sq. m (33 sq. ft)
 Storage area (approx.) 2.91 sq. m (31 sq. ft)

Jacksons Earlsfield
 372-374 Garratt Lane
 Earlsfield
 London
 SW18 4ES
 020 8971 7979

Energy Rating: C We aim to make our particulars both accurate and reliable. However they are not guaranteed; nor do they form part of an offer or contract. If you require clarification on any points then please contact us, especially if you're traveling some distance to view. Please note that appliances and heating systems have not been tested and therefore no warranties can be given as to their good working order.