



Woodfield Avenue, SW16

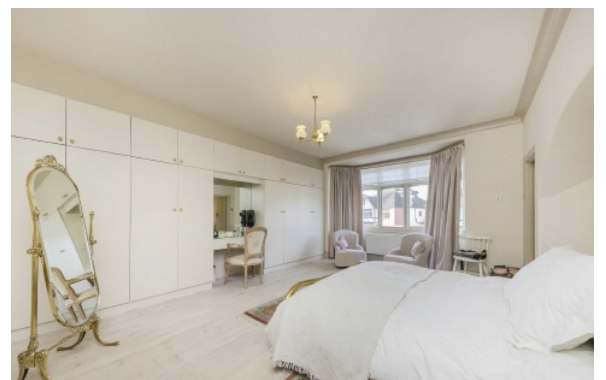
£1,850,000

A spacious five bedroom detached family home situated on one of the most sought after roads in Streatham Hill. The property benefits from just shy of 3,000 sq ft of liveable space with off-Street Parking & room for

- Detached Family Home
- Five Double Bedrooms
- Off-Street Parking
- Double Garage
- South Facing Garden
- Extension Potential



The property is a two minute walk to the green open spaces of Tooting Bec Common and within easy walking distance of Balham mainline and underground station. There are several well regarded schools in the area, including Streatham and Clapham High, Northwood Senior & Henry Cavendish Primary School. Dulwich College is a short 10 minute drive away, with Dulwich foundation coaches serving DPL, Jags & Alleyn's.







Jacksons Streatham
1-3 De Montfort Parade
Streatham High Road
Streatham
London
SW16 1BU

Energy Rating: D We aim to make our particulars both accurate and reliable. However they are not guaranteed; nor do they form part of an offer or contract. If you require clarification on any points then please contact us, especially if you're traveling some distance to view. Please note that appliances and heating systems have not been tested and therefore no warranties can be given as to their good working order.