



Mandalay Road, SW4

£925,000

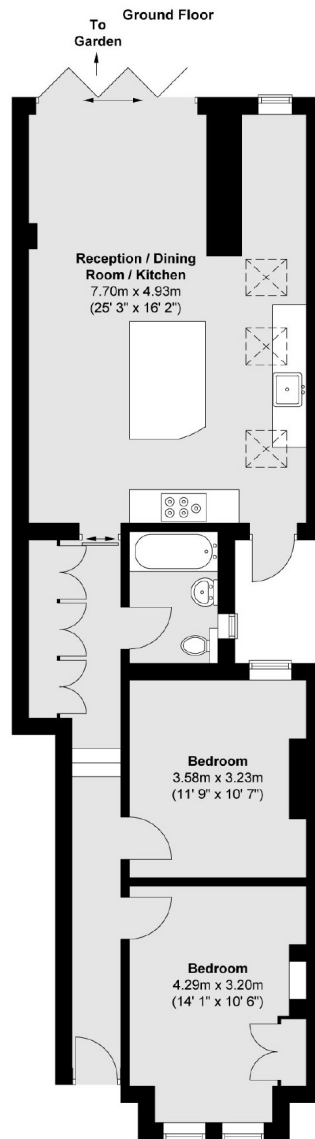
A stunning two bedroom ground floor maisonette with private garden. The property has been extended and modernised to an immaculate standard creating an open plan living space similar to that of a family home in the area.

- Victorian Maisonette
- Two Double Bedrooms
- Open Plan Kitchen Diner
- Private Garden
- Modernised Throughout
- Freehold



Mandalay Road is conveniently located in between Abbeville Road and Clapham Common. It is a quiet residential road, predominantly consisting of purpose built maisonettes. Residents have easy access to the open expanses of Clapham Common as well as the parade of independent shops, bars and restaurants on Abbeville Road. You can commute to the City via Clapham South (Northern Line) or numerous regular bus routes.





Total area (approx.) : 80.8 sq. m (870 sq. ft)

Jacksons Clapham
73 Abbeville Road
London
SW4 9JN
020 8875 7995
clapham.sales@jacksonsstateagents.com

Energy Rating: We aim to make our particulars both accurate and reliable. However they are not guaranteed; nor do they form part of an offer or contract. If you require clarification on any points then please contact us, especially if you're traveling some distance to view. Please note that appliances and heating systems have not been tested and therefore no warranties can be given as to their good working order.