



## Links Gardens, SW16

£750,000

A beautifully presented two bedroom semi-detached house situated within a quiet cul-de-sac just off of Gibsons Hill. This property is ideally located for access to Streatham Common, with its woodlands,

- Semi-Detached
- Two Bedrooms
- Nearby The Rookery
- Large Garden
- Great Condition
- Modern Kitchen





Links Gardens is situated within a quiet residential cul-de-sac just off Gibsons Hill. This property is close to Streatham High Road and the wide variety of bars, cafés and other local amenities it has to offer. Transport links are found at Streatham Station, Norbury and West Norwood train stations providing convenient links to the City. The wide green open spaces of Streatham Common, The Rookery and Norwood Grove are also close by.

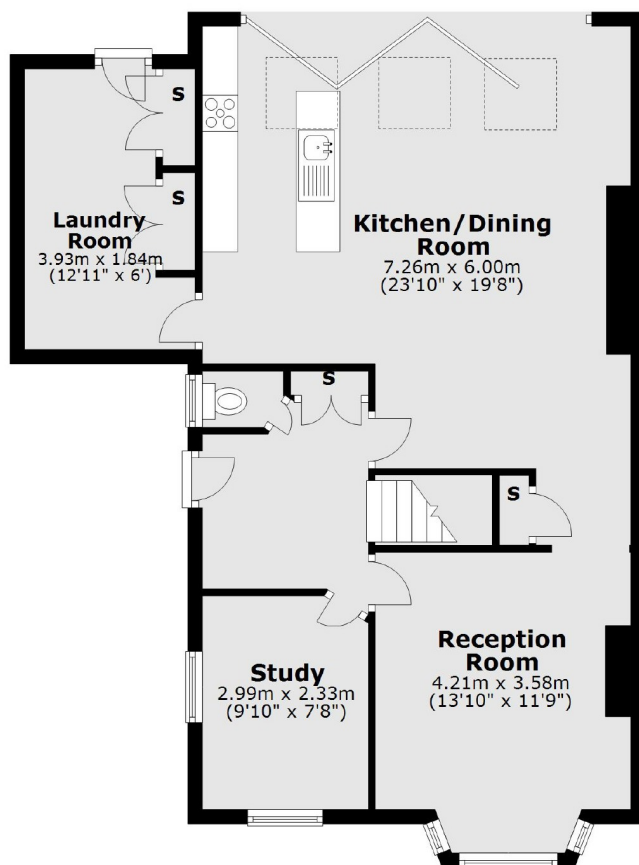




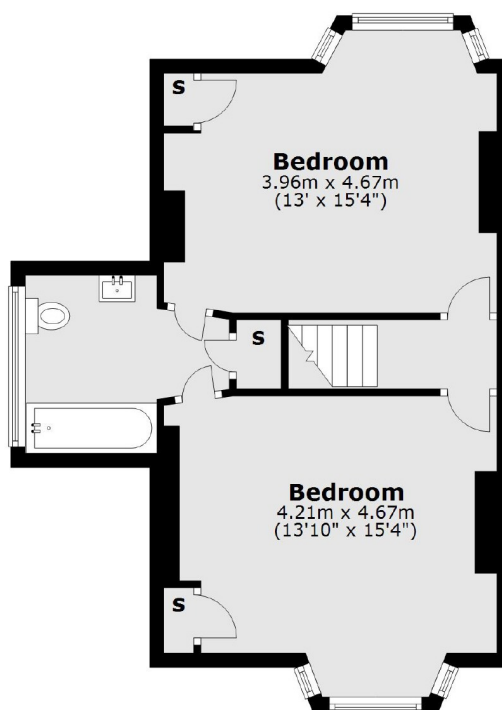




### Ground Floor



### First Floor



Total area: approx. 121.7 sq. metres (1309.5 sq. feet)

Jacksons Streatham  
1-3 De Montfort Parade  
Streatham High Road  
Streatham  
London  
SW16 1BU

Energy Rating: We aim to make our particulars both accurate and reliable. However they are not guaranteed; nor do they form part of an offer or contract. If you require clarification on any points then please contact us, especially if you're traveling some distance to view. Please note that appliances and heating systems have not been tested and therefore no warranties can be given as to their good working order.