



Crown Lane Gardens, SW16

£495,000

A fantastic four bedroom flat located in nearby proximity to the evergreen Streatham Common. The flat is in great condition and benefits from a private balcony.

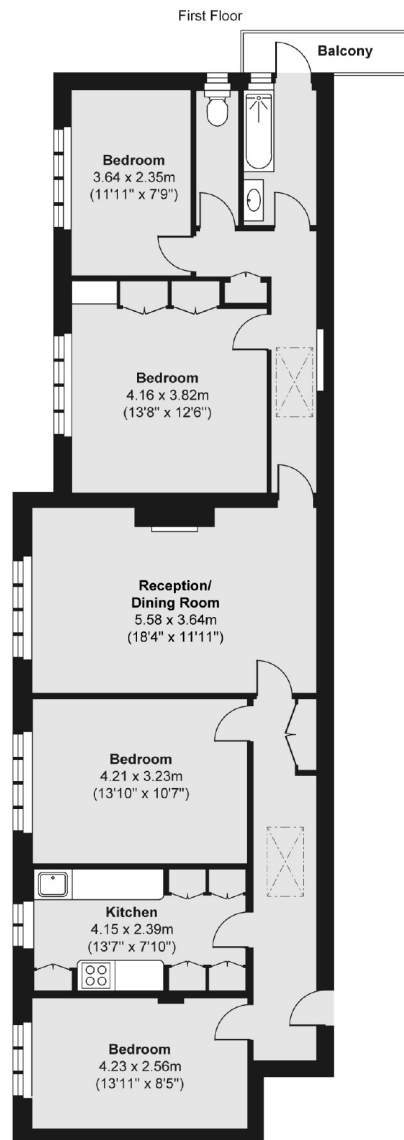
- Four Bedrooms
- Nearby Streatham Common
- Great Condition
- Private Balcony
- Communal Gardens
- Nearby amenities and transport



Crown Lane Gardens is a private Art Deco development positioned just off Streatham Common. The development is well located for all the amenities of the area including many bars, independent coffee shops, restaurants, several large supermarkets, leisure centre and health clubs. Streatham Common has multiple transport links including three train stations and numerous bus routes leading into London.







Total area (approx.) 105.34 sq. m (1,134 sq. ft)
Balcony area (approx.) 2.57 sq. m (28 sq. ft)

Jacksons Streatham
1-3 De Montfort Parade
Streatham High Road
Streatham
London
SW16 1BU

Energy Rating: C We aim to make our particulars both accurate and reliable. However they are not guaranteed; nor do they form part of an offer or contract. If you require clarification on any points then please contact us, especially if you're traveling some distance to view. Please note that appliances and heating systems have not been tested and therefore no warranties can be given as to their good working order.