



LYON ROAD
WALTON-ON-THAMES

JACKSON-STOPS 

LYON ROAD, WALTON-ON-THAMES, KT12

ASKING PRICE: £1,300 PCM

The apartment has a double bedroom with fitted wardrobes, a reception room with a Juliet balcony, an open-plan kitchen/reception area, a modern bathroom, allocated parking, and is a short walk from Hersham Train Station.

Located on Molesey Road, moments from Esher Rugby Club, and just a few minutes' walk to Hersham Mainline Station and local amenities, this property is in the ideal location.

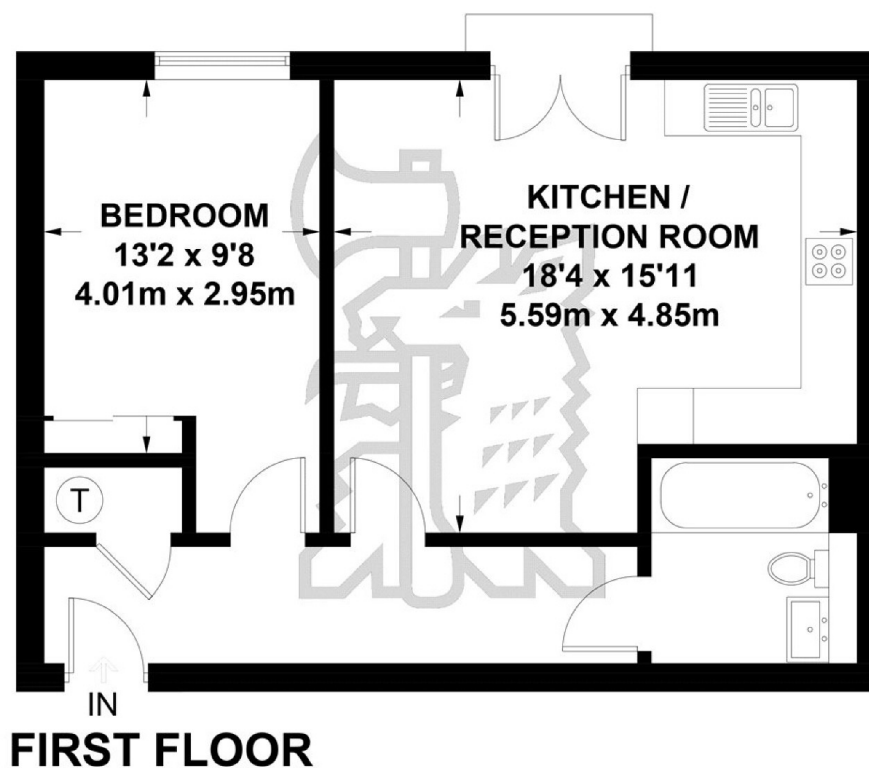
KEY FEATURES

- First Floor Apartment
- One Bedroom
- Open- Plan Living
- Fully Fitted Kitchen
- Allocated Parking
- 0.1 Miles to Hersham Mainline Rail Station

Energy Rating: . We aim to make our particulars both accurate and reliable. However they are not guaranteed; nor do they form part of an offer or contract. If you require clarification on any points then please contact us, especially if you are travelling some distance to view. Please note that appliances and heating systems have not been tested and therefore no warranties can be given as to their good working order.

LYON ROAD

Approximate Gross Internal Area = 54.5 sq m / 587 sq ft



Exposure House © 2017 (ID323177)

www.exposurehouse.co.uk

Whilst every attempt has been made to ensure the accuracy of this floor plan, measurements of doors, windows and rooms are approximate and no responsibility is taken for any error or omission. This illustration is for identification purposes only. Measured and drawn in accordance with RICS guidelines. Not drawn to scale, unless stated. Dimensions shown are to the nearest 3" and are to the points indicated by the arrow heads.

37 QUEEN'S ROAD, WEYBRIDGE, SURREY, KT13 9UQ

01932 859 355

weybridge@jackson-stops.co.uk

jackson-stops.co.uk

JACKSON-STOPS