



Hopton Road, SW16

£2,300 PCM

A three bedroom detached house with off street parking and private garden. Located next to Streatham Station the property is ideal for three professional sharers looking for an easy commute.

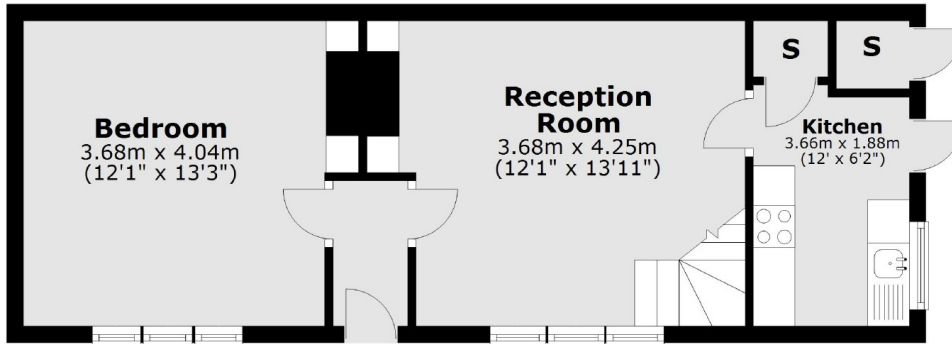
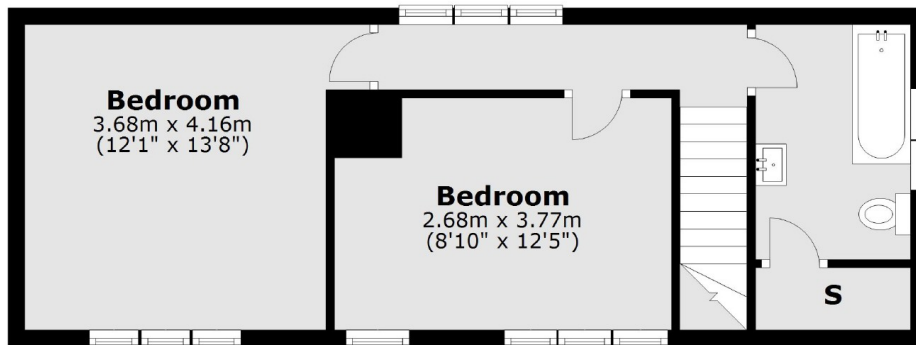
- Three Double Bedrooms
- Off Street Parking
- Detached House
- Recently Redecorated
- Secluded Garden
- Close to Streatham Station

For further information on the costs associated with renting a property, please pop into our office or visit our website.



Ideally located for access to Streatham Station, Streatham Common Station and the bus links which provide services direct to Brixton tube station. Streatham Common with its woodlands, Nature Reserve and Rookery gardens is also close by. Numerous bars, independent coffee shops, restaurants, large supermarkets and a leisure centre which includes a swimming pool and ice rink are all close by.



Ground Floor**First Floor**

Total area: approx. 78.4 sq. metres (844.1 sq. feet)

Jacksons Streatham
1-3 De Montfort Parade
Streatham High Road
Streatham
London
SW16 1BU

Energy Rating: We aim to make our particulars both accurate and reliable. However they are not guaranteed; nor do they form part of an offer or contract. If you require clarification on any points then please contact us, especially if you're traveling some distance to view. Please note that appliances and heating systems have not been tested and therefore no warranties can be given as to their good working order.