



208 Ashley Down Road

Ashley Down, Bristol, BS7 9JZ

Asking price £599,950



A great Investment opportunity to purchase a six bedroom house on Ashley Down Road. This property is already set up for "buy to let" and we have tenants lined up for the academic year 2021-2022.

Situated in a popular location and a short walk away from Gloucester Road with its wide array of independent shops and vibrant restaurants and cafes. Public transport links are 0.5 miles away and motorway links are easily accessible.

- £2820 FIXED Rent Income PCM until JUNE 2022
- 6 Large double bedrooms
- 1826 Mid-Terrace House
- 1 x Kitchen downstairs

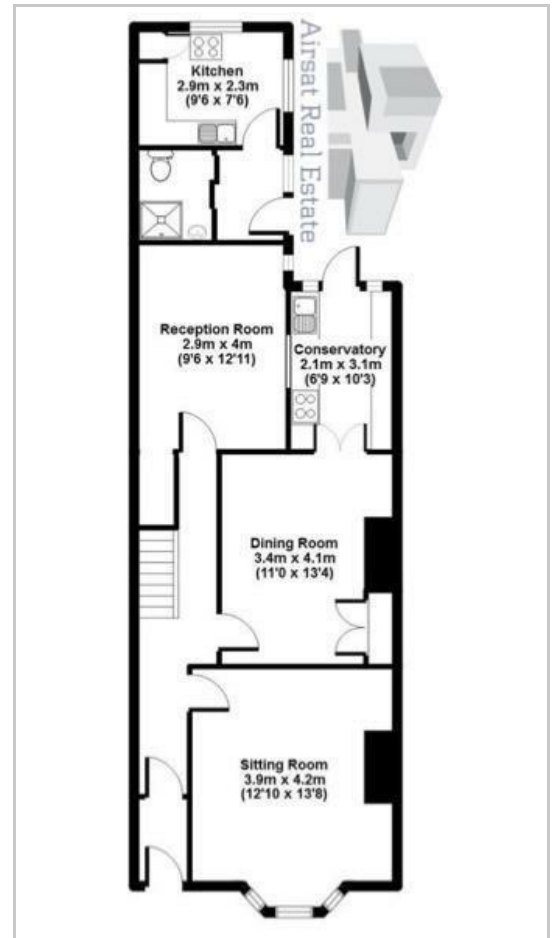


- Lounge 11'1" x 13'5" (3.4m x 4.1m)
- Kitchen 1 6'10" x 10'2" (2.1m x 3.1m)
- Kitchen 2 9'6" x 7'6" (2.9m x 2.3m)
- Kitchenette3
- Bathroom 1
- Bathroom 2
- Room 1 12'9" x 13'9" (3.9m x 4.2m)
- Room 2 9'6" x 13'1" (2.9m x 4m)
- Room 3 9'6" x 13'5" (2.9m x 4.1m)
- Room 4 11'1" 13'5" (3.4m 4.1m)
- Room 5 13'1" x 13'9" (4m x 4.2m)
- Room 6 16'4" x 16'8" (5m x 5.1m)

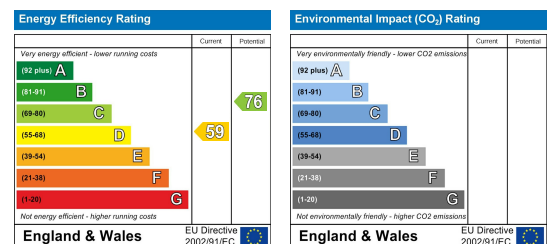
Area Map



Floor Plans



Energy Efficiency Graph



These particulars, whilst believed to be accurate are set out as a general outline only for guidance and do not constitute any part of an offer or contract. Intending purchasers should not rely on them as statements of representation of fact, but must satisfy themselves by inspection or otherwise as to their accuracy. No person in this firm's employment has the authority to make or give any representation or warranty in respect of the property.

