



All Souls Avenue, NW10

Freehold - £995,000

FOR SALE is this charming 1920s three bedroom family home, offering 1,903 sq ft of living space across three floors, situated just off Chamberlayne Road.

The Ground Floor welcomes you with a formal reception room with period features, a WC and a dining/study room that flows seamlessly into a spacious kitchen, leading to a 63 ft mature garden. The First Floor has two double bedrooms, a family bathroom and a separate WC, while the loft conversion houses the spacious principal bedroom, complete with eaves storage and an en-suite shower room.

Located on a popular road in Kensal Rise, the property is moments away from the beautiful open spaces of King Edward VII park and offers fantastic transport links such as Kensal Rise (Overground - Zone 2), numerous bus routes, and amenities such as the plethora of restaurants on both College Road and Chamberlayne Road.

- 3 bedroom 1920s family home
- Offering 1,903 sq ft of living space
- Open plan kitchen/dining area
- 63 ft mature garden
- Viewing highly recommended
- Council: Brent (E)

020 8459 1133

enquiries@cameronsstiff.co.uk

cameronsstiff.co.uk



All Souls Avenue, London, NW10

Approximate Area = 1724 sq ft / 160.1 sq m

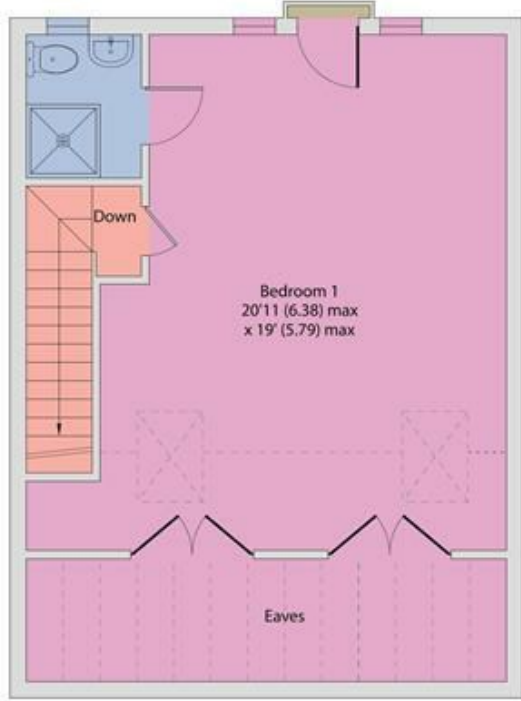
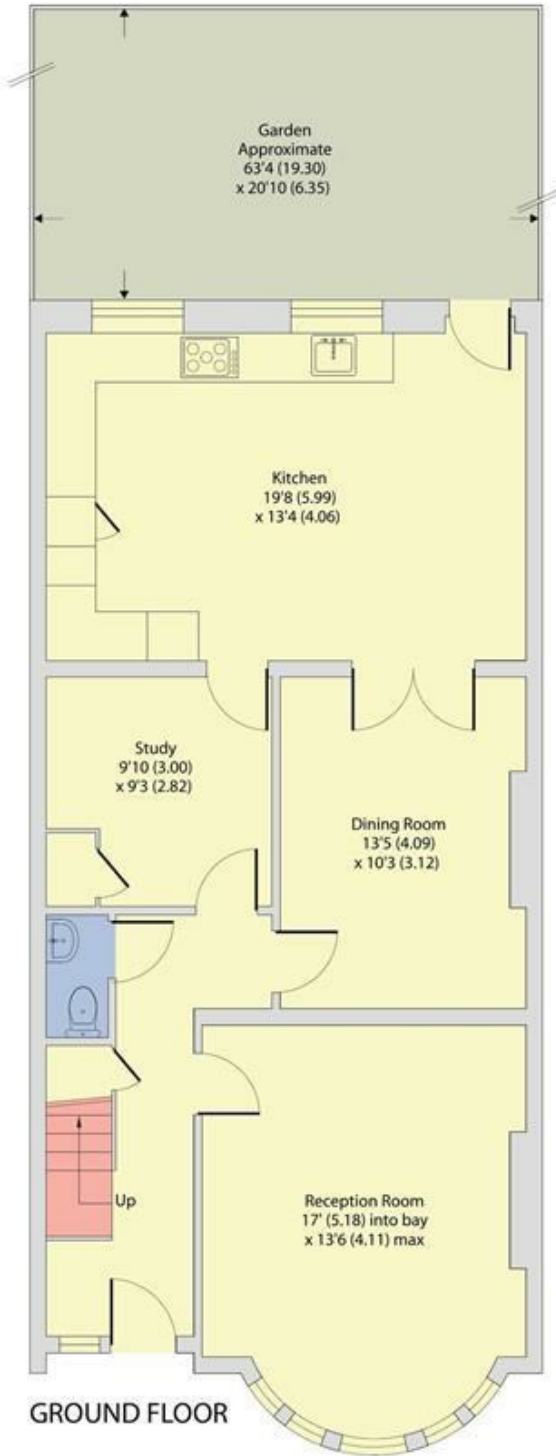
Limited Use Area(s) = 179 sq ft / 16.6 sq m

Total = 1903 sq ft / 176.7 sq m

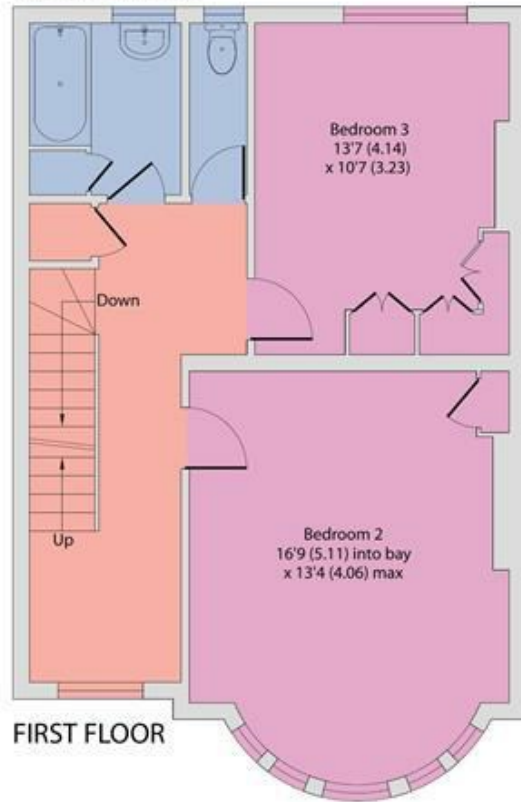
For identification only - Not to scale



Denotes restricted head height



SECOND FLOOR



EPC: D
Ref: 19020435



Floor plan produced in accordance with RICS Property Measurement Standards incorporating International Property Measurement Standards (IPMS2 Residential). © nichecom 2024. Produced for Camerons Stiff & Co. REF: 1190388

