



Harlesden Road, NW10

TO LET - £1,900 Per Month

AVAILABLE NOW is this delightful Garden Flat spanning 666 sq ft set within this converted Edwardian building close to Harlesden High Road.

This Ground Floor Flat has a spacious bay-fronted reception room, two good-sized double bedrooms, a three-piece bathroom and a separate bright modern kitchen leading to a 50 ft south-facing garden.

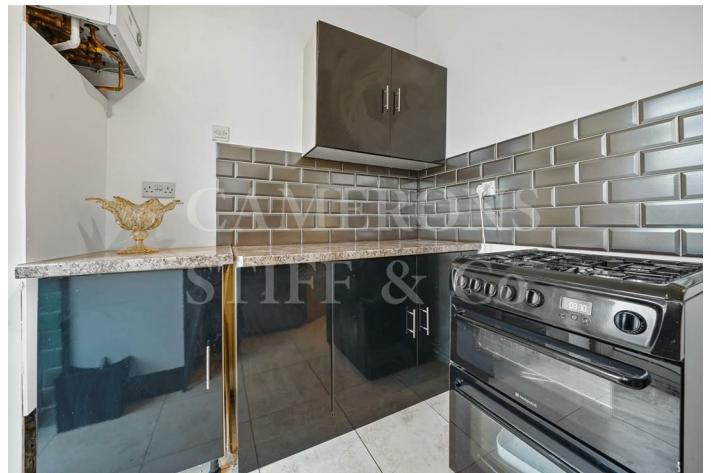
The property is a comfortable distance to Willesden Green Station (Jubilee Line, Zone 2) with its fast access to the West End and City. Brent Cross Shopping Centre is within easy reach as is the M1 motorway. Viewing recommended.

- AVAILABLE NOW - 2 bedroom Garden Flat
- Large bay fronted reception & separate kitchen
- Two double bedrooms, one bathroom
- Sole use of 50 ft rear garden
- COUNCIL: Brent (C) DEPOSIT: £2,192
- Viewing is highly recommended

020 8450 9377

rentals@cameronsstiff.co.uk

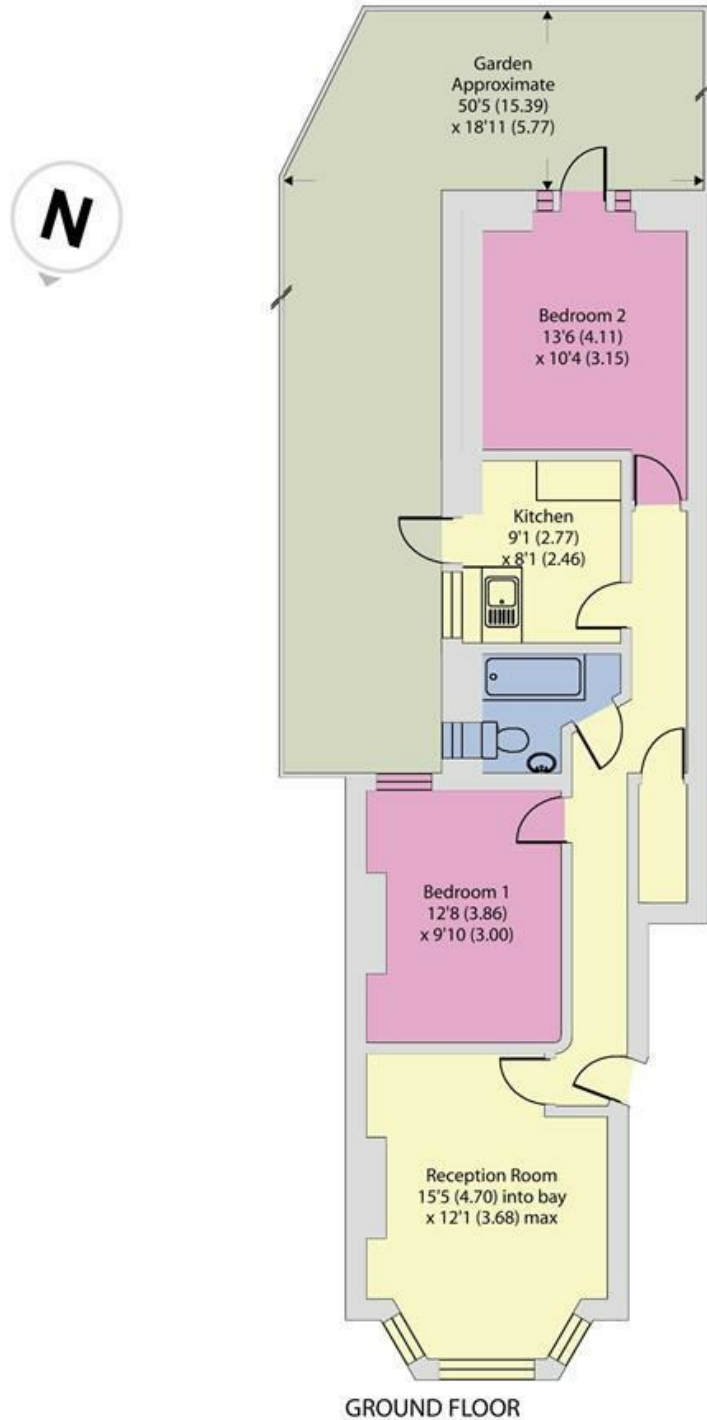
cameronsstiff.co.uk



Harlesden Road, London, NW10

Approximate Area = 666 sq ft / 61.9 sq m

For identification only - Not to scale



Floor plan produced in accordance with RICS Property Measurement Standards incorporating International Property Measurement Standards (IPMS2 Residential). © n'checcom 2024. Produced for Camerons Stiff & Co. REF: 474075

EPC: D

Ref: 16328095

