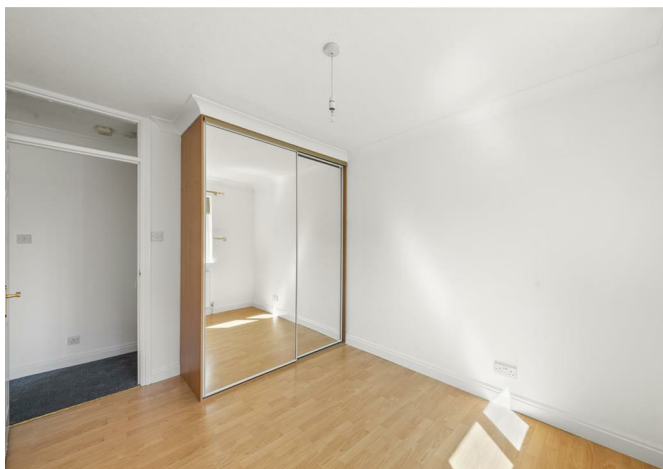


ALLDAY
& MILLER

Perry Close, Uxbridge, UB8 3HR
£220,000





Perry Close, Uxbridge, UB8 3HR

£220,000

- One Double Bedroom Maisonette
- First Floor
- Loft Space For Storage
- Well Maintained Communal Gardens
- Catchment For Highly Regarded Local Schools
- 995 Year Lease
- Chain Free
- Allocated Parking
- Short Walk To Local Amenities & Transport Links
- Private Residential Location

Description

This delightful property presents an excellent opportunity for first-time buyers seeking a comfortable and convenient home. It is well-maintained and in good condition throughout, making it ready for its new owners.

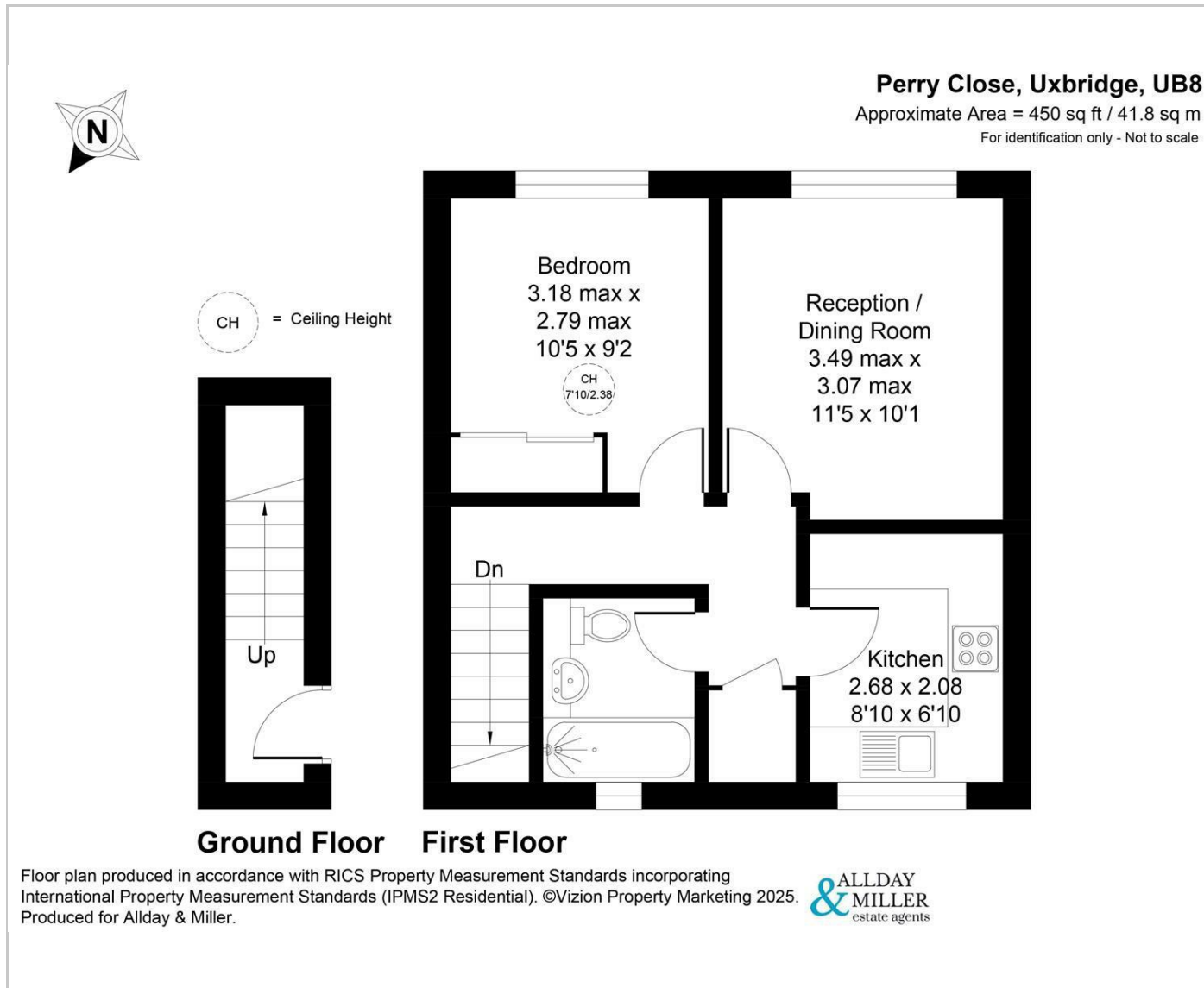
Upon entering, you will find a bright and airy reception/dining room that serves as the heart of the home, perfect for both relaxation and entertaining, the fitted kitchen is functional and well-equipped, a spacious double bedroom and the bathroom completes the home.

Situation

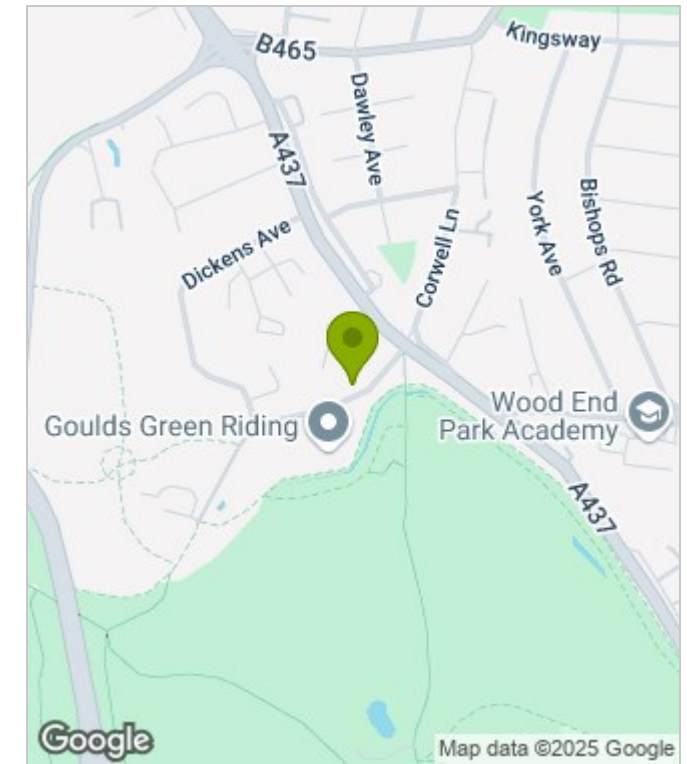
Perry Close just a short drive from Uxbridge town centre with its variety of local shops, restaurants bars, gyms and a cinema. The Metropolitan and Piccadilly line available from the station, in addition a 250 yard walk to the A10 and U4 bus service linking to the Elizabeth Line and Heathrow Airport making the journey to Central London or Airport a breeze. For the commuters the A40, M40 & M25 are just a short drive away with its links to London, Home Counties, Stockley business park and other local amenities . The area is also served by a number of highly regarded schools including Bishopshalt Senior School and Hillingdon Primary School.



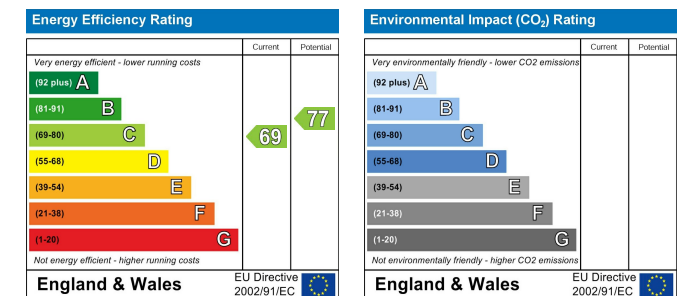
Floor Plans



Area Map



Energy Performance Graph



These particulars, whilst believed to be accurate are set out as a general outline only for guidance and do not constitute any part of an offer or contract. Intending purchasers should not rely on them as statements of representation of fact, but must satisfy themselves by inspection or otherwise as to their accuracy. No person in this firm's employment has the authority to make or give any representation or warranty in respect of the property.