



Knighten Street, E1W

£500,000

 1  1  1  D

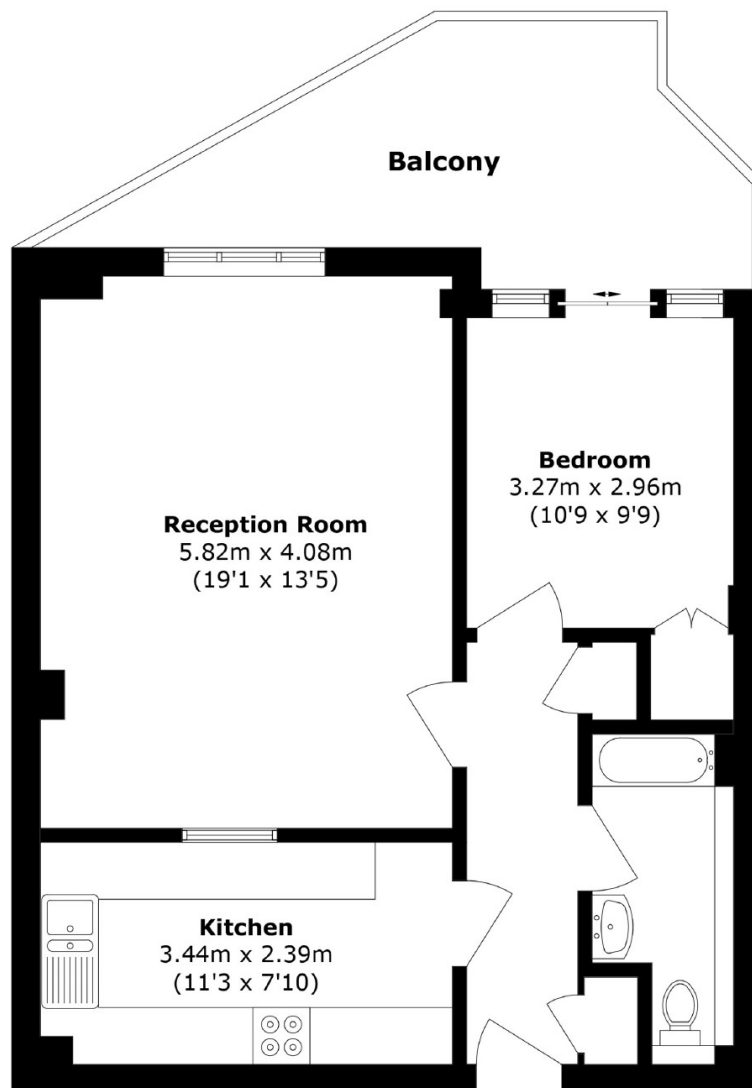
- 1 Double bedroom
- Separate fitted kitchen
- Reception
- Private terrace
- Secure underground parking
- Porter



One double bedroom apartment located within a highly sought-after and secure development in West Wapping, featuring porter service and secure underground parking. This property boasts a generously sized lounge, a private terrace ideal for relaxing or entertaining, and a separate fitted kitchen. Additional features include laminate wood flooring throughout and portorage, ensuring both convenience and peace of mind.

Perfectly positioned close to Tower Hill stations and the historic St Katharine Docks, this apartment offers excellent transport links and access to a vibrant local lifestyle.





Total area (approx.): 59.4 sq. m (639.4 sq. ft)

Balcony area (approx.): 14.2 sq. m (152.8 sq. ft)

35A Wapping High Street,
London, E1W 1NR
020 7665 5589
ea2group.com