



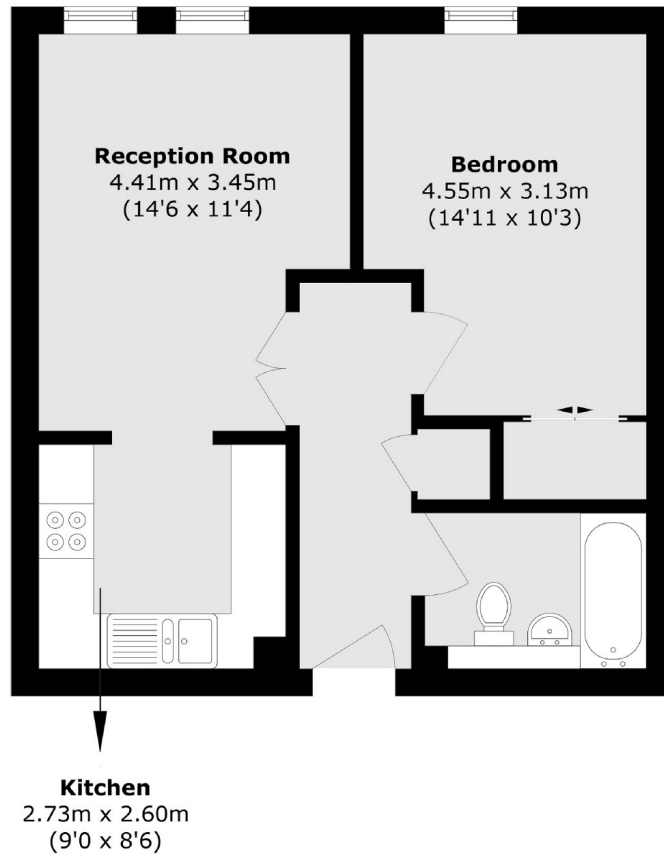
London Road, SW16

£225,000

A well presented, one bedroom apartment with on site gym and concierge, located just 0.6 miles to Norbury Station. Energy rating: C.

Solent Court is set just off Norbury town centre. The nearest mainline station, Norbury, is only 0.6 Miles away, offering regular rail services to London Bridge and London Victoria. The area is well served by highly regarded schools, with Norbury Park and Streatham Common also nearby, providing excellent recreational facilities.

One bed apartment, Gym & concierge, 0.6 miles to station, Communal gardens & terrace, Modern finish, Energy rating: C



Total area (approx.): 46.1 sq. m (496.2 sq. ft)

James Alexander
1341 London Road,
Norbury, SW16 4BE
020 8629 8028
norburysales@jamesalexander.com

Energy Rating: C We aim to make our particulars both accurate and reliable. However they are not guaranteed; nor do they form part of an offer or contract. If you require clarification on any points then please contact us, especially if you're travelling some distance to view. Please note that appliances and heating systems have not been tested and therefore no warranties can be given as to their good working order.