



Cremer Street, E2

£750,000

 2  1  2  B

- Ready to move in
- £0 ground rent
- Lift access
- Underfloor heating
- Integrated kitchen appliances
- Lime washed wooden flooring

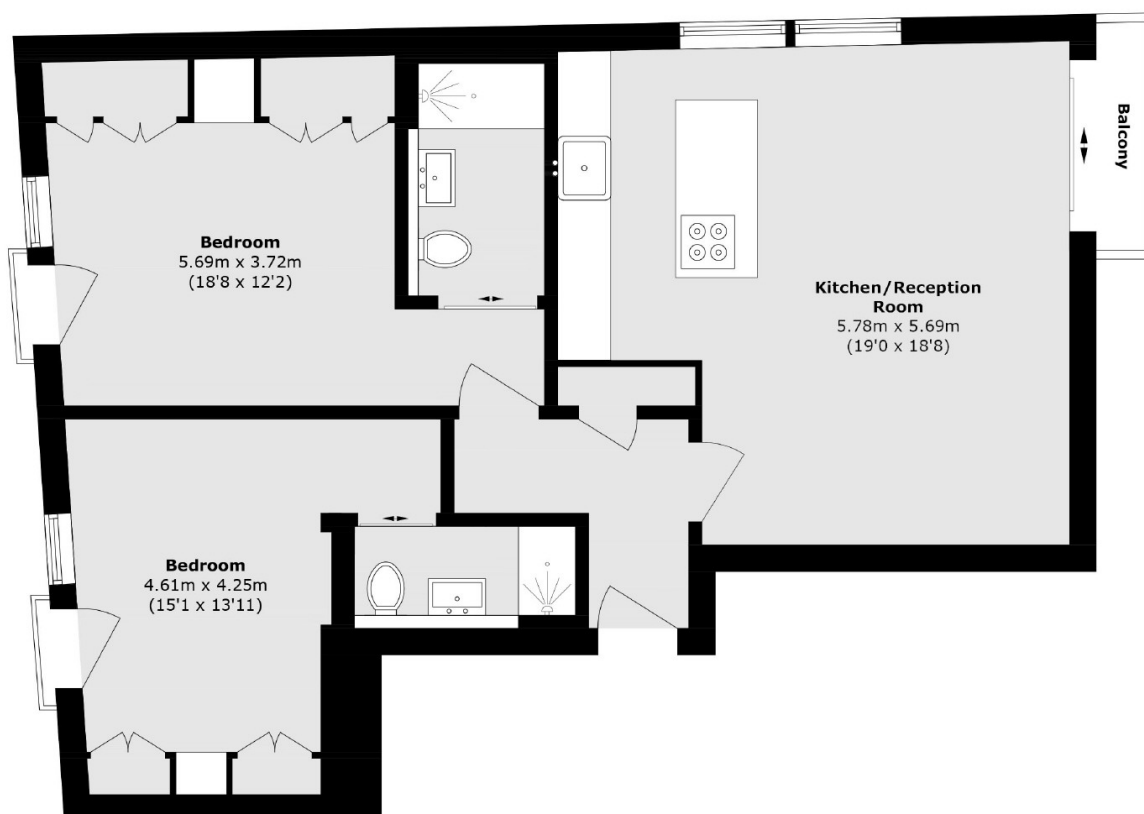


A stunning 2-bedroom, 2-bathroom apartment on the first floor of a modern industrial-style development. Spanning 860 sq ft, it features lift access, lime-washed wooden floors, and large triple-glazed windows flooding the space with natural light. The open-plan kitchen includes bespoke Neolith surfaces and an island with extractor hood, while bathrooms are finished with premium fittings. Both bedrooms have fitted wardrobes, built-in LG TVs, underfloor heating, and integrated blinds. *Images may be of show flat

This home stands out with its high-end craftsmanship, smart lighting, underfloor heating, offering a luxurious yet tranquil living experience.

Located on Cremer Street, you're close to Kingsland Road, Hackney Road, and Shoreditch Triangle. Excellent transport links include Hoxton Overground, Old Street Underground, and Liverpool Street stations, all within easy walking distance.





Total area (approx.): 75.9 sq. m (816.5 sq. ft)

Balcony area (approx.): 1.4 sq. m (15.0 sq. ft)

35A Wapping High Street,
London, E1W 1NR
020 7665 5589
ea2group.com