



Cremer Street, E2

£1,750,000

 3  1  3 

- Ready to move in
- £0 ground rent
- Lift access
- Private terrace

- Underfloor heating
- Integrated kitchen appliances
- Lime washed wooden flooring
- 10-year warranty for peace of mind

ea²

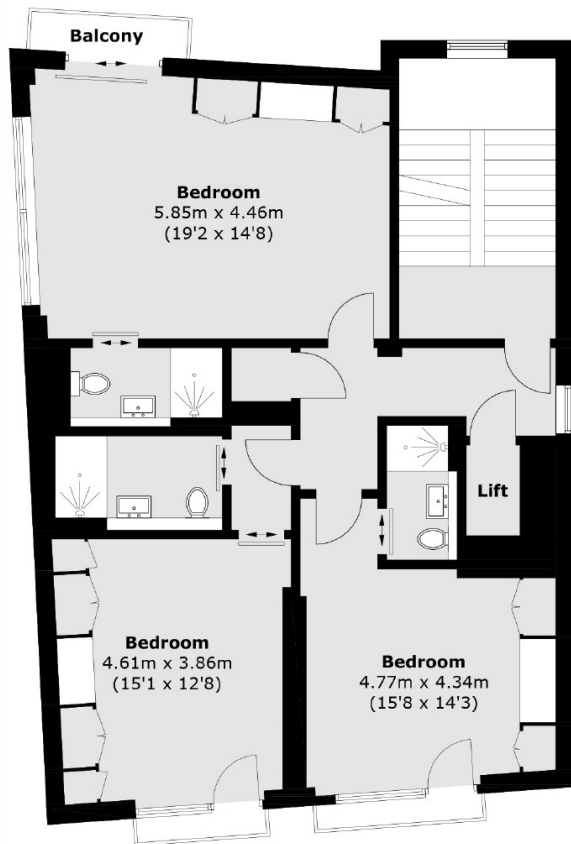


This exceptional penthouse duplex spans the entire 4th and 5th floors of a striking industrial-style development, offering 3 bedrooms, 3 bathrooms, and 1,847 sq ft of luxurious living space. Directly accessible from the lift, the top floor features a vast open-plan living area with a designer kitchen, large island, and sliding doors that open onto a private decked terrace with stunning North London views. The cleverly designed staircase maintains privacy while connecting the two floors seamlessly.

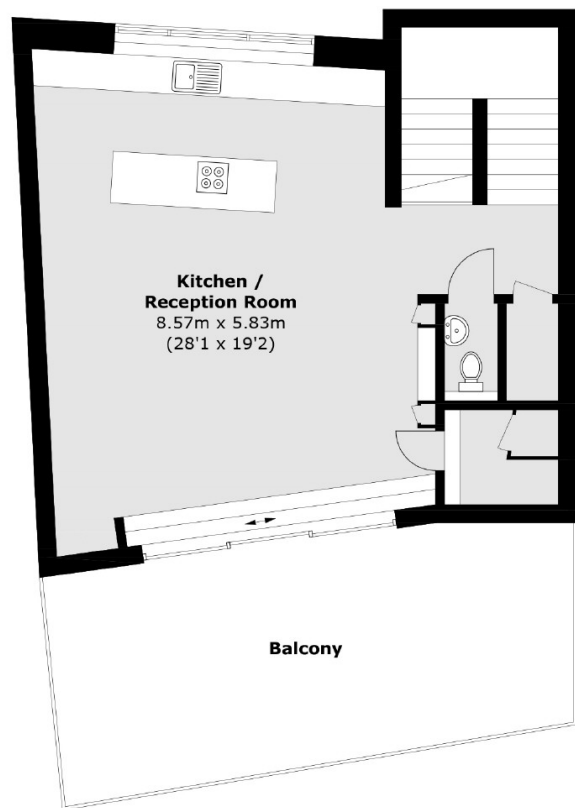
On the lower floor, you'll find three spacious double bedrooms, each with an en-suite shower room and ample built-in storage, plus a separate WC. The apartment showcases exceptional craftsmanship and high-end finishes throughout, delivering a tranquil and sophisticated living experience in this vibrant district.

Situated on Cremer Street, the property is at the heart of London's trendiest neighborhoods, with Kingsland Road, Hackney Road, and Shoreditch High Street just a short walk away. Transport links are excellent, with Hoxton Overground a minute from your door, and Old Street and Liverpool Street

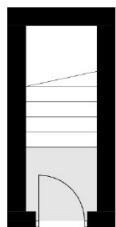




Fourth Floor



Fifth Floor



Third Floor

Total area (approx.): 171.1 sq. m (1,841.6 sq. ft)
Balcony area: 33.0 sq. m (355.2 sq. ft)

35A Wapping High Street,
London, E1W 1NR
020 7665 5589
ea2group.com