

Yannon Drive, Teignmouth, TQ14 9JP



A versatile 3/4 bedroom link detached house situated on a good size corner plot with no onward chain. The property has a Balcony with lovely views off the main bedroom, en suite shower room, garage and utility room. FREEHOLD, COUNCIL TAX BAND - D, EPC - D.

Guide Price £450,000

01626 862379

www.fraserandwheeler.co.uk

FRASER & WHEELER

FRONT DOOR TO

ENTRANCE HALL

Radiator, stairs leading to the first floor with understairs storage cupboard. Doors to:

LOUNGE

Radiator and box bay window to the rear with open aspect over the rear garden.

KITCHEN/BREAKFAST ROOM

Matching base and eye level units with work surfaces over, stainless steel sink with drainer and mixer tap, plumbing for a washing machine, gas hob with oven below and extractor hood over, radiator, space for a fridge/freezer, uPVC double glazed window to the front and door to:

UTILITY ROOM

Wall mounted central heating boiler, Door leading to the rear garden, radiator, worksurface with sink and space for an appliance.

BEDROOM 3/DINING ROOM

Window to the rear looking onto the rear garden and radiator.

BATHROOM

Suite comprising Panelled bath with electric shower and glass screen over, pedestal wash hand basin, WC, part tiled walls and 2 obscure glazed windows to the side.

FIRST FLOOR LANDING

Doors to:

BEDROOM 1

Radiator, double doors leading to the balcony with lovely views and door to:

EN SUITE SHOWER ROOM

Suite comprising shower enclosure, WC, wash hand basin, radiator, obscure glazed window to the side and part tiled walls.

BALCONY

A covered balcony with wood railing and lovely views over the garden, Teignmouth and towards the Teign Estuary.

BEDROOM 2

Feature window to the front and radiator.





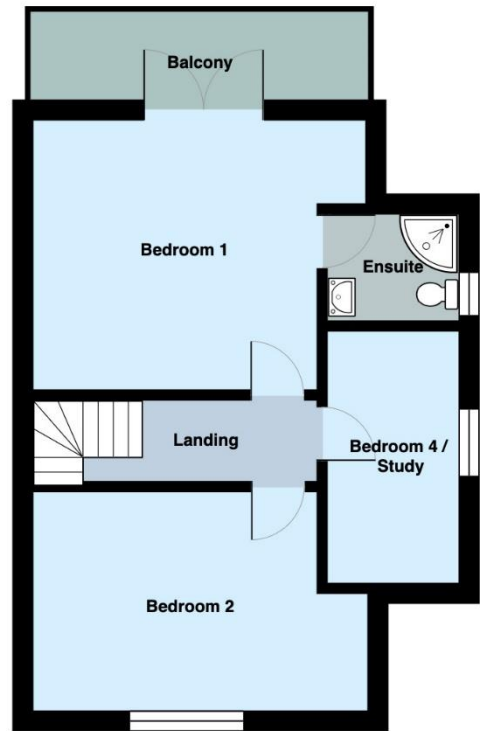
OUTSIDE

To the front and side of the property a crazy paved pathway leads to the front door and side access. The front garden has crazy paved pathways and borders with established plants and shrubs. The rear garden is a real feature of the property with 2 good size areas of lawn, established plants, trees and shrubs, a southerly aspect and rear access to a detached single garage to the bottom of the garden.





Ground Floor
Approx Area: 66.4 m² ... 715 ft²



First Floor
Approx Area: 46.4 m² ... 499 ft²



19 Queen Street, Dawlish, Devon, EX7 9HB
 Telephone: 01 626 862379
 Email: info@fraserandwheeler.co.uk
www.fraserandwheeler.co.uk



Fraser & Wheeler has not tested any apparatus, equipment fixtures and fittings or any services and cannot verify that they are in working order or fit for purpose. Prospective purchasers are advised to obtain their own independent reports from relevant professionals such as a surveyor or solicitor. Fraser & Wheeler advises buyers to make their own enquiries as to the tenure. All measurements and room descriptions are for general guide purposes only and buyers should verify information provided before purchasing furniture, fittings, carpets or appliances.