



Springfield Road, CR7

£750,000

A double fronted four bedroom family home, large garden and off street parking.

Energy rating: D



Presented in good condition, this extended family home comprising to the ground floor is a spacious Kitchen and utility area, w.c, thru lounge, conservatory and storage space. Upstairs there are four bedrooms one of which is en-suite and separate bathroom with walk in shower. Externally there is off street parking for multiple cars, a garage and a large private garden.

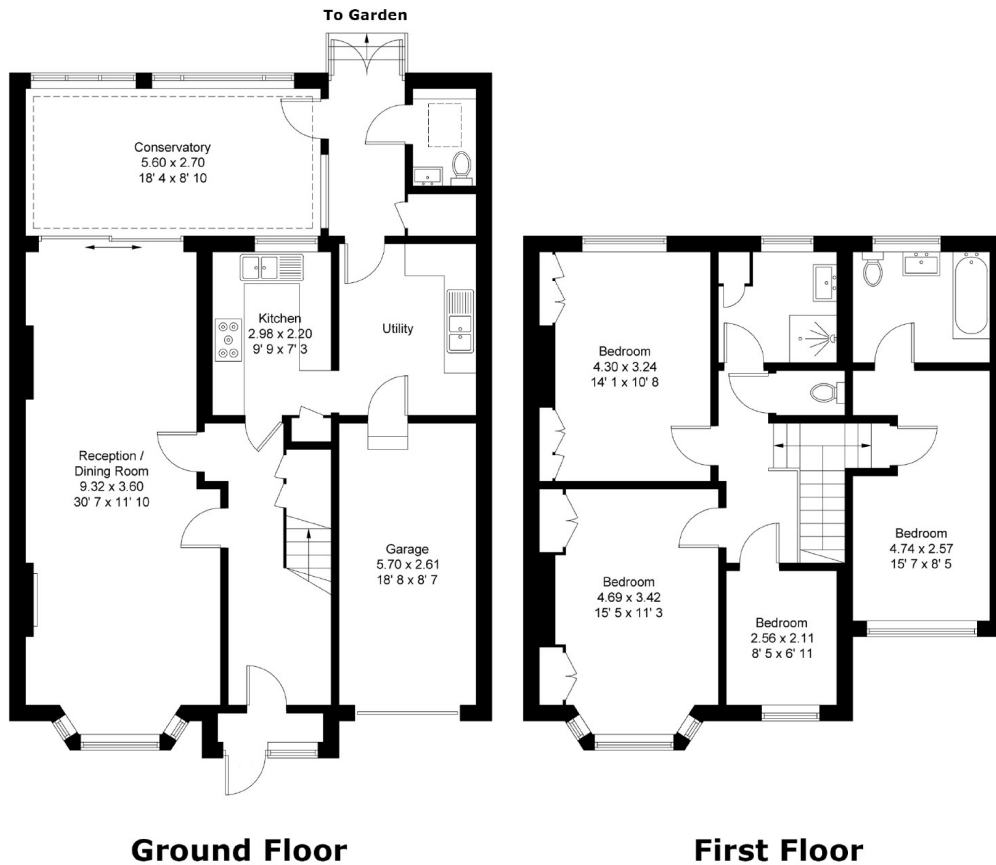
Springfield Road is located in a sought-after area within Norbury off of Green Lane. This property benefits from being in close proximity to local amenities and schools. The property also lies only 0.8 miles from Norbury Station.

Double fronted, Four bedrooms, Two Bathrooms, Driveway & garage, Large garden, EPC: D









Total area (approx.): 172.9 sq. m (1,861.1 sq. ft)

James Alexander
1341 London Road,
Norbury, SW16 4BE
020 8629 8028
norburysales@jamesalexander.com

Energy Rating: D We aim to make our particulars both accurate and reliable. However they are not guaranteed; nor do they form part of an offer or contract. If you require clarification on any points then please contact us, especially if you're travelling some distance to view. Please note that appliances and heating systems have not been tested and therefore no warranties can be given as to their good working order.